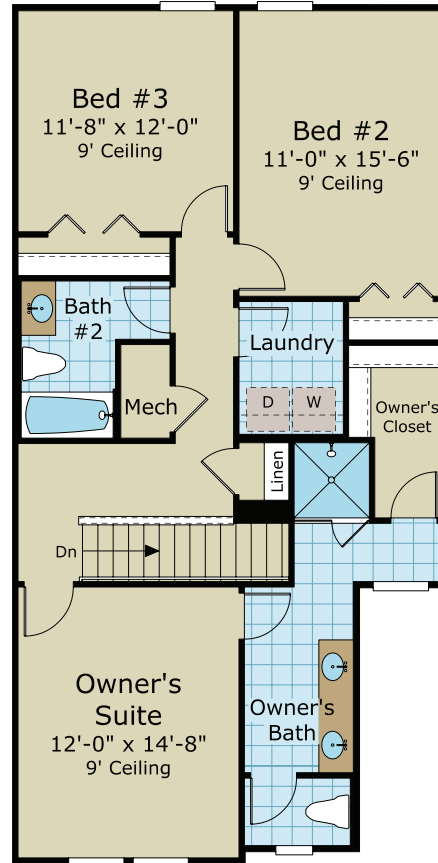


FIRST FLOOR



SECOND FLOOR

THE BIRCH
3 BEDROOMS, 2 1/2 BATHS
2-CAR GARAGE
LIVING AREA: 1,845 sq. ft.

Providence Homes is proud to offer **ENERGY STAR®** and **EPA Indoor airPLUS®** qualified homes in Woodland Park at Nocatee! We believe your home should be designed and built to the highest standards of health, sustainability, and efficiency. Here's how we are doing it. Each home is inspected during construction and field-tested upon completion by an independent **RESNET®** accredited energy rater. All Providence Homes will receive a **HERS®** Index Rating which is required for a home to receive the **ENERGY STAR®** and **EPA Indoor airPLUS®** labels. See Sales Associate for more information on our ENERGY STAR® Guarantee. Prices, specifications, exclusive features, and availability are subject to change without notice.

Marketed Exclusively Providence Realty LLC. CGC053640 04.30.2024



MyProvidenceHome.com

