

**SAJ-2010-03676 (HyDry Docks)**

**ENCLOSURE 2: Dock Locations and Vista Trimming**

**- Twenty Mile Village Phase 6 Residential Docks, prepared by Environmental Services, Inc., dated May 2021 (1 Sheet)**

**- Twenty Mile Village Phase 6 Residential Docks, prepared by Environmental Services, Inc., dated May 2021 (1 Sheet)**

**- Twenty Mile Village - Phases 6, Project Location Maps, prepared by Environmental Services, Inc., dated April 2021 (31 Sheets)**



**TWENTY MILE VILLAGE**  
**PHASE 6**  
**RESIDENTIAL DOCKS**  
**May 2021**





# TWENTY MILE VILLAGE PHASE 6 RESIDENTIAL DOCKS



**Legend**

- Project Boundary
- ICW Federal Channel
- 38' Setback
- 62.5' Setback
- 100' Setback
- Wetlands
- OffSite Vista Pruning
  - Upland (2.68 ac.±)
  - Wetland (1.26 ac.±)
- OnSite Vista Pruning
  - Wetland (2.86 ac.±)

0 80 160 Feet

Source: Englund-Thoms & Miller, Inc.

Disclaimer: The information depicted on this figure is for conceptual purposes only, serves as a reference, and is not intended to be used for engineering or planning purposes. It is subject to review and approval by appropriate regulatory agencies.





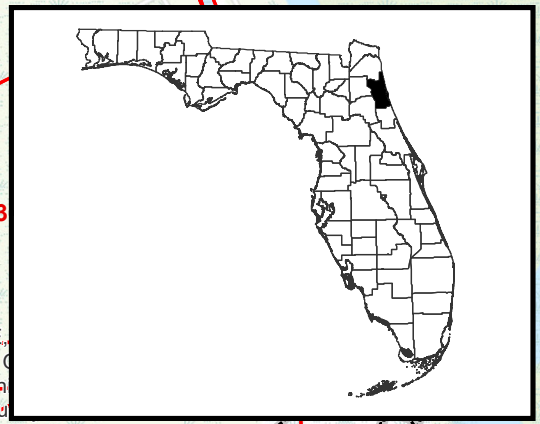
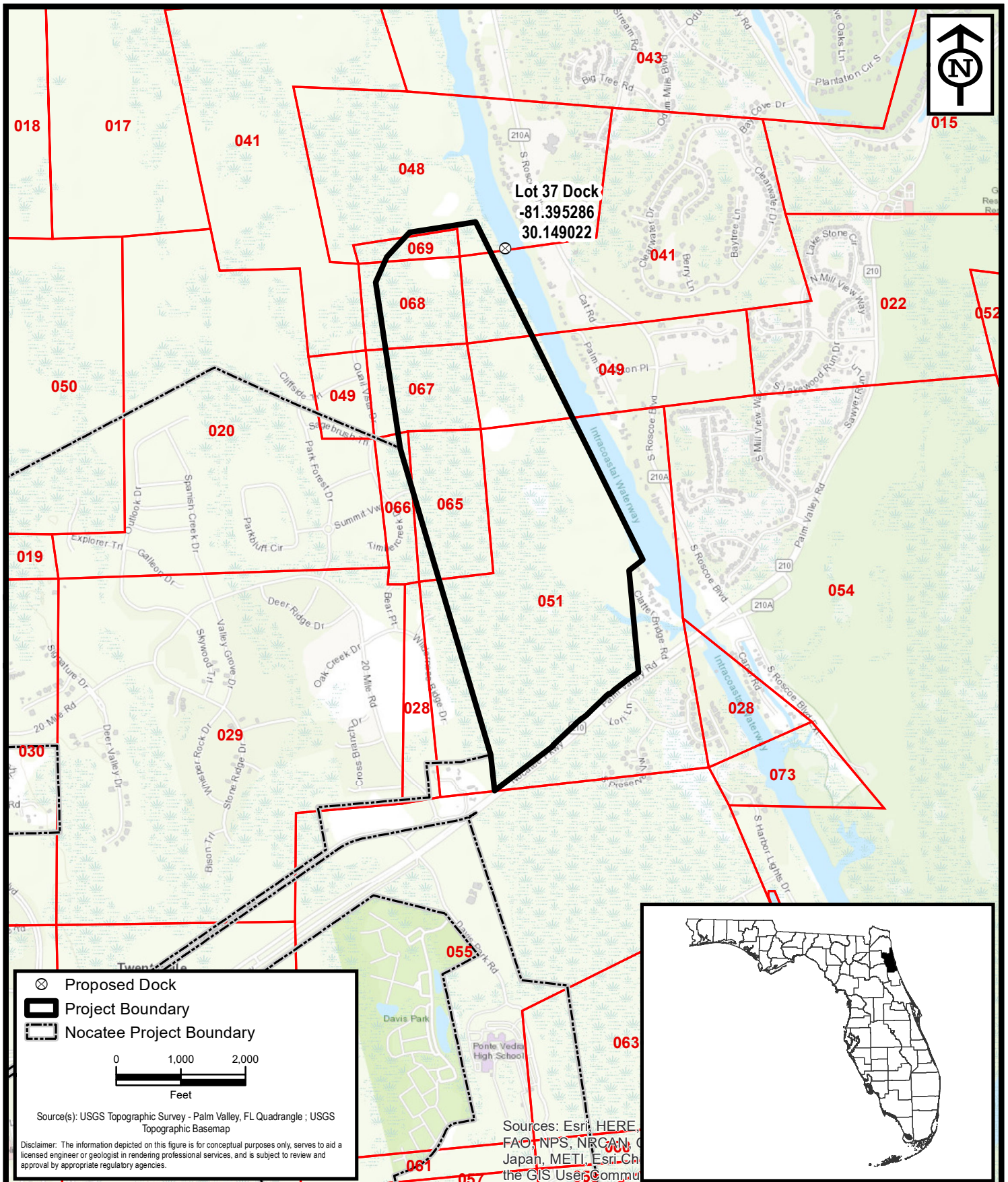












**ENVIRONMENTAL SERVICES, INC.**  
A Terracon COMPANY

7220 FINANCIAL WAY, SUITE 100 JACKSONVILLE, FL 32256  
PH. (904) 470-2200 FAX (904) 470-2112

**Project Location**

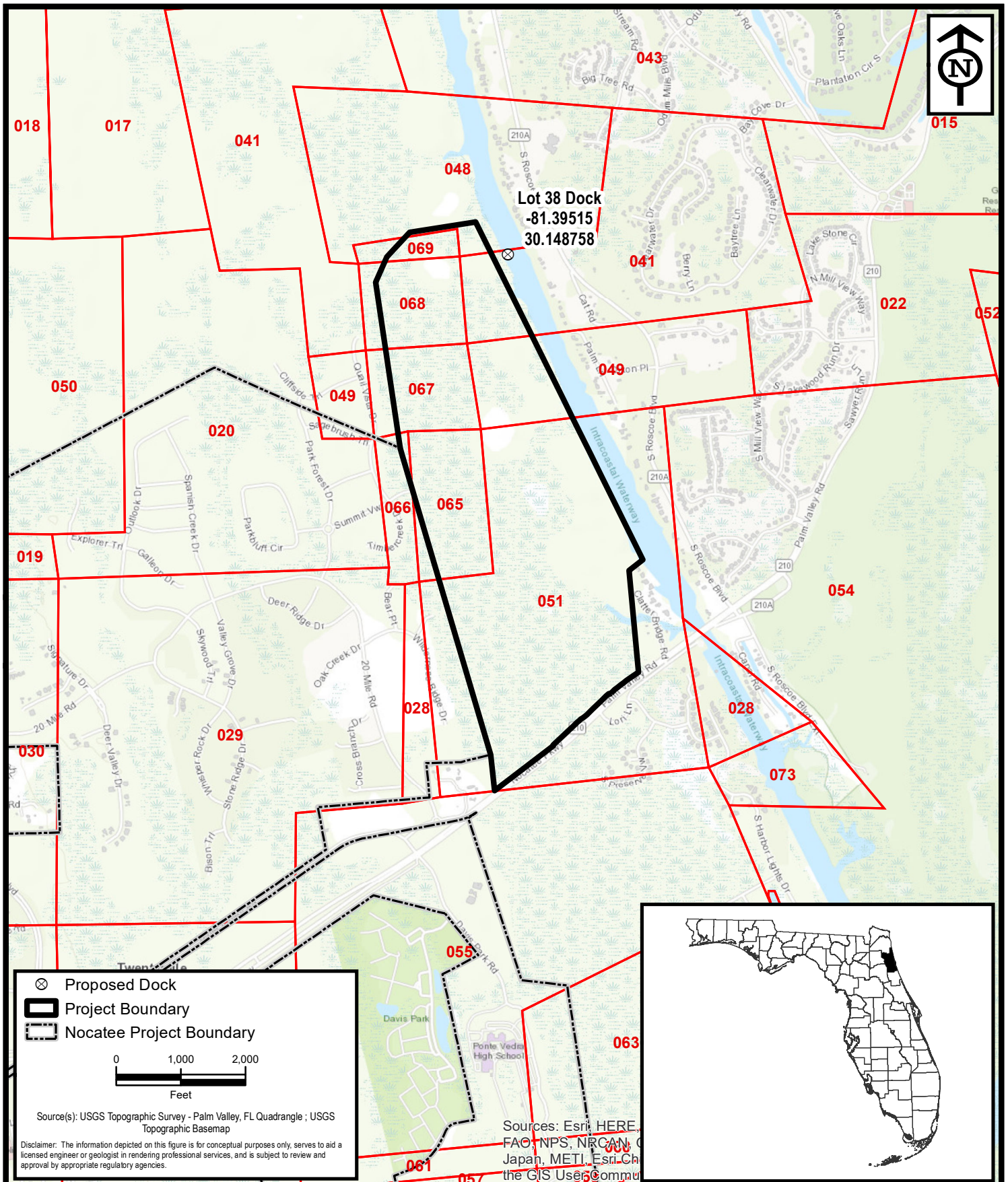
Lot 37 Dock

**Twenty Mile Village - Phase 6**

St. Johns County, Florida

Project No.	HK207039
Date	Apr 2021
Drawn By	JRN
Checked By	AMH
Approved By	PCP
<b>Figure No.</b>	<b>1</b>





**ENVIRONMENTAL  
SERVICES, INC.**  
A Terracon COMPANY

7220 FINANCIAL WAY, SUITE 100 JACKSONVILLE, FL 32256  
PH. (904) 470-2200 FAX (904) 470-2112

Project Location

Lot 38 Dock

**Twenty Mile Village - Phase 6**

St. Johns County, Florida

Project No. HK207039

Date Apr 2021

Drawn By JRN

Checked By AMH

Approved By PCP

Figure No. 1

























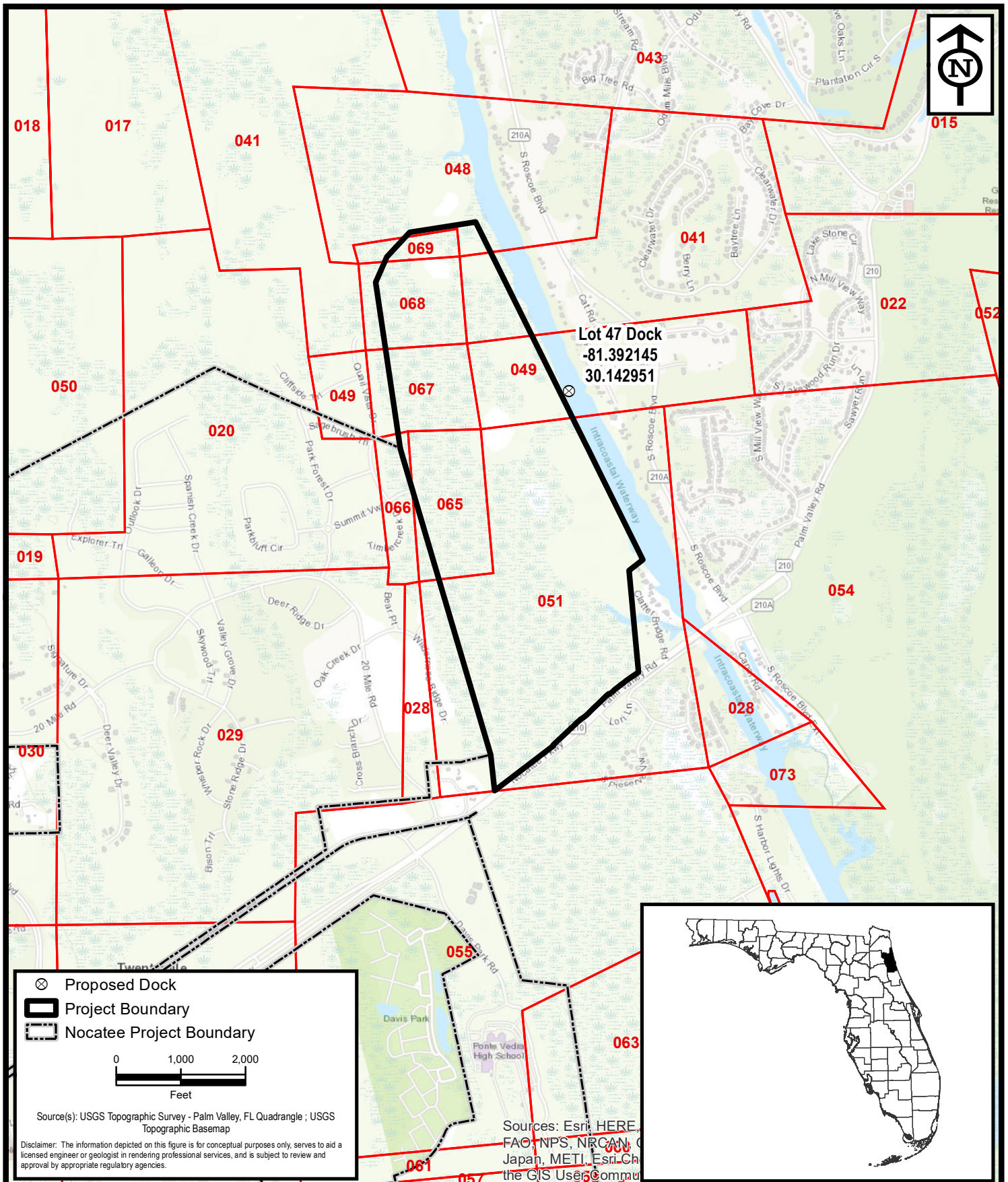












**ENVIRONMENTAL  
SERVICES, INC.**  
A Terracon COMPANY

7220 FINANCIAL WAY, SUITE 100 JACKSONVILLE, FL 32256  
PH. (904) 470-2200 FAX (904) 470-2112

Project Location

Lot 47 Dock

**Twenty Mile Village - Phase 6**

St. Johns County, Florida

Project No. HK207039

Date Apr 2021

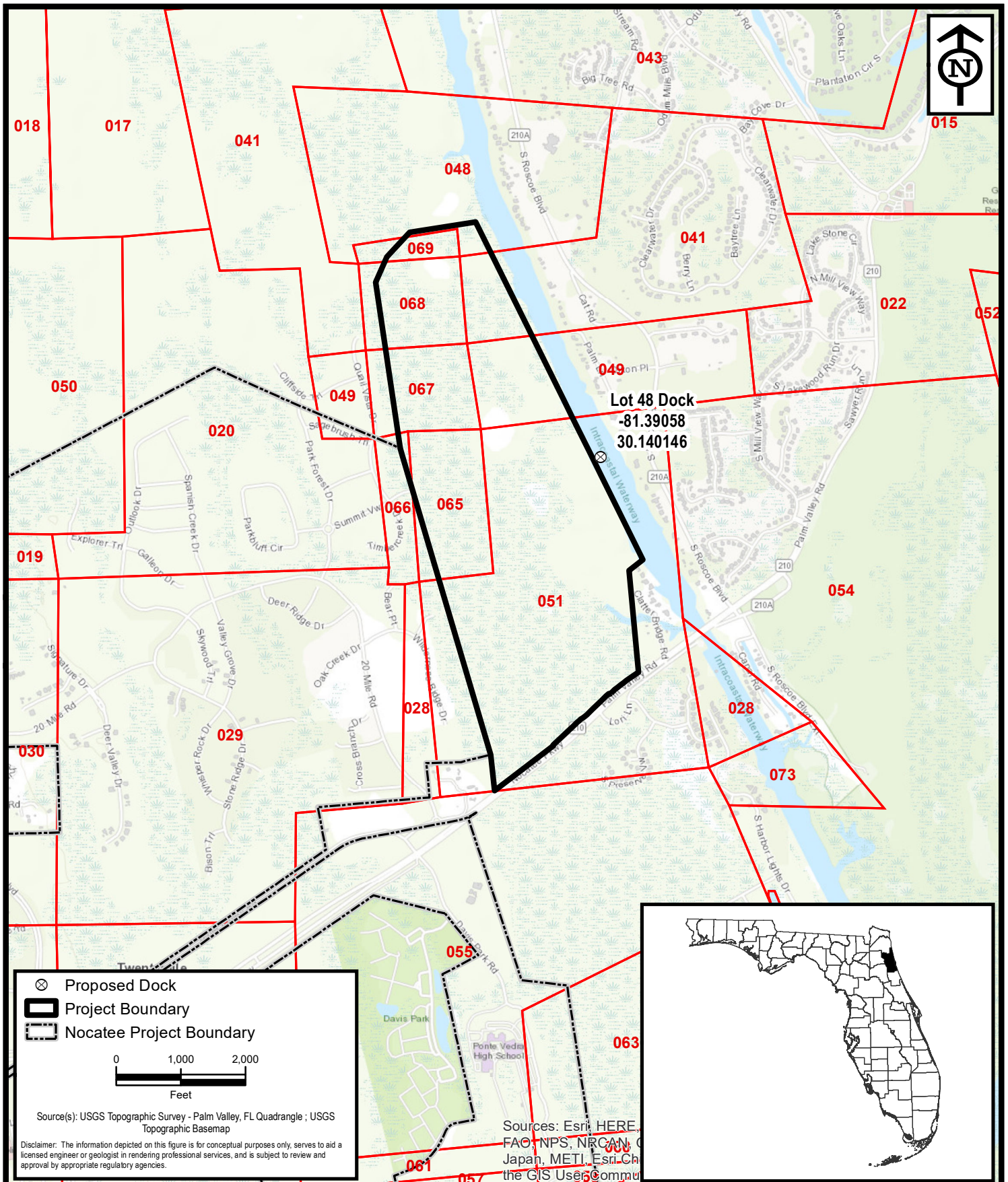
Drawn By JRN

Checked By AMH

Approved By PCP

Figure No. 1





**ENVIRONMENTAL  
SERVICES, INC.**  
A Terracon COMPANY

7220 FINANCIAL WAY, SUITE 100 JACKSONVILLE, FL 32256  
PH. (904) 470-2200 FAX (904) 470-2112

Project Location

Lot 48 Dock

**Twenty Mile Village - Phase 6**

St. Johns County, Florida

Project No. HK207039

Date Apr 2021

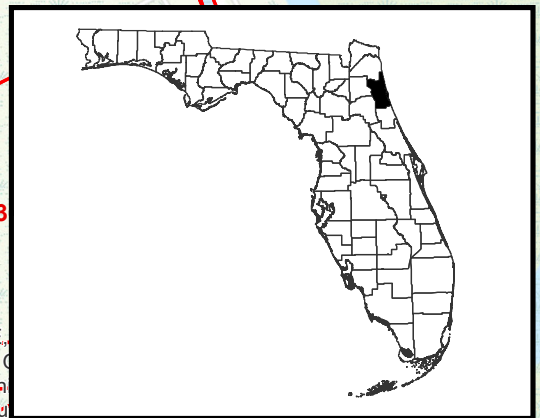
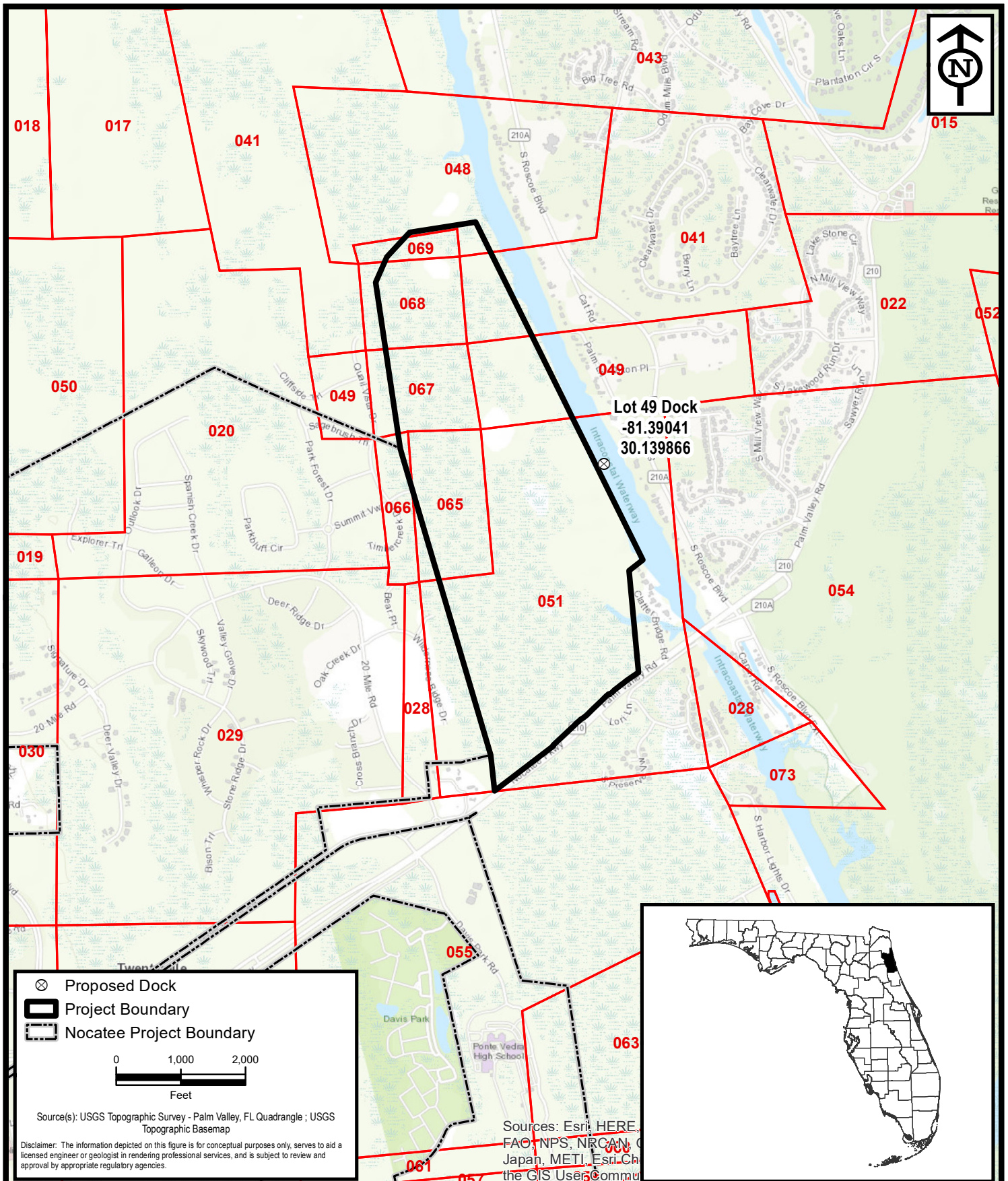
Drawn By JRN

Checked By AMH

Approved By PCP

Figure No. 1





**ENVIRONMENTAL  
SERVICES, INC.**  
A Terracon COMPANY

7220 FINANCIAL WAY, SUITE 100 JACKSONVILLE, FL 32256  
PH. (904) 470-2200 FAX (904) 470-2112

Project Location

Lot 49 Dock

**Twenty Mile Village - Phase 6**

St. Johns County, Florida

Project No. HK207039

Date Apr 2021

Drawn By JRN

Checked By AMH

Approved By PCP

Figure No. 1









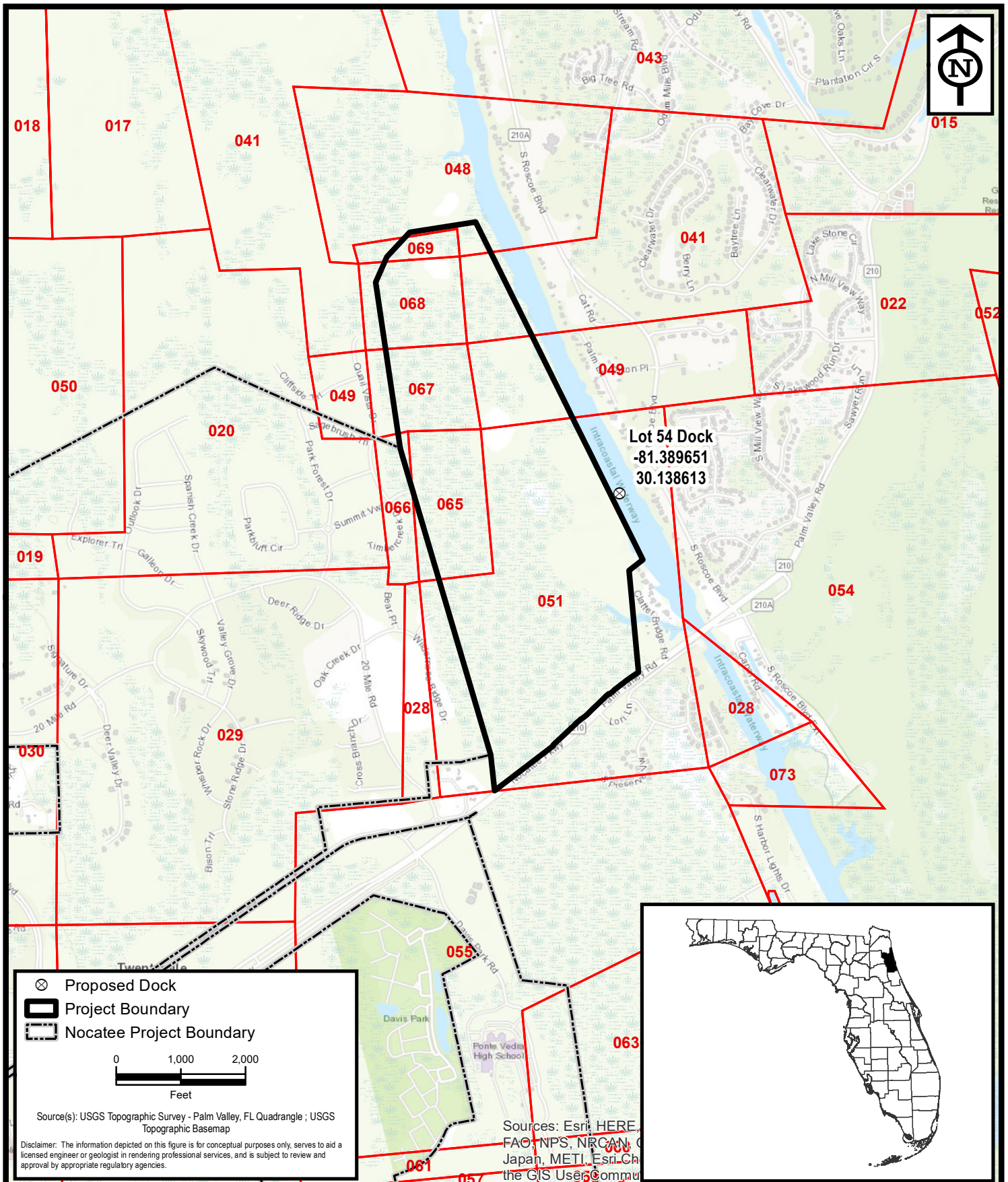












**ENVIRONMENTAL  
SERVICES, INC.**  
A Terracon COMPANY

7220 FINANCIAL WAY, SUITE 100 JACKSONVILLE, FL 32256  
PH. (904) 470-2200 FAX (904) 470-2112

Project Location

Lot 54 Dock

**Twenty Mile Village - Phase 6**

St. Johns County, Florida

Project No. HK207039

Date Apr 2021

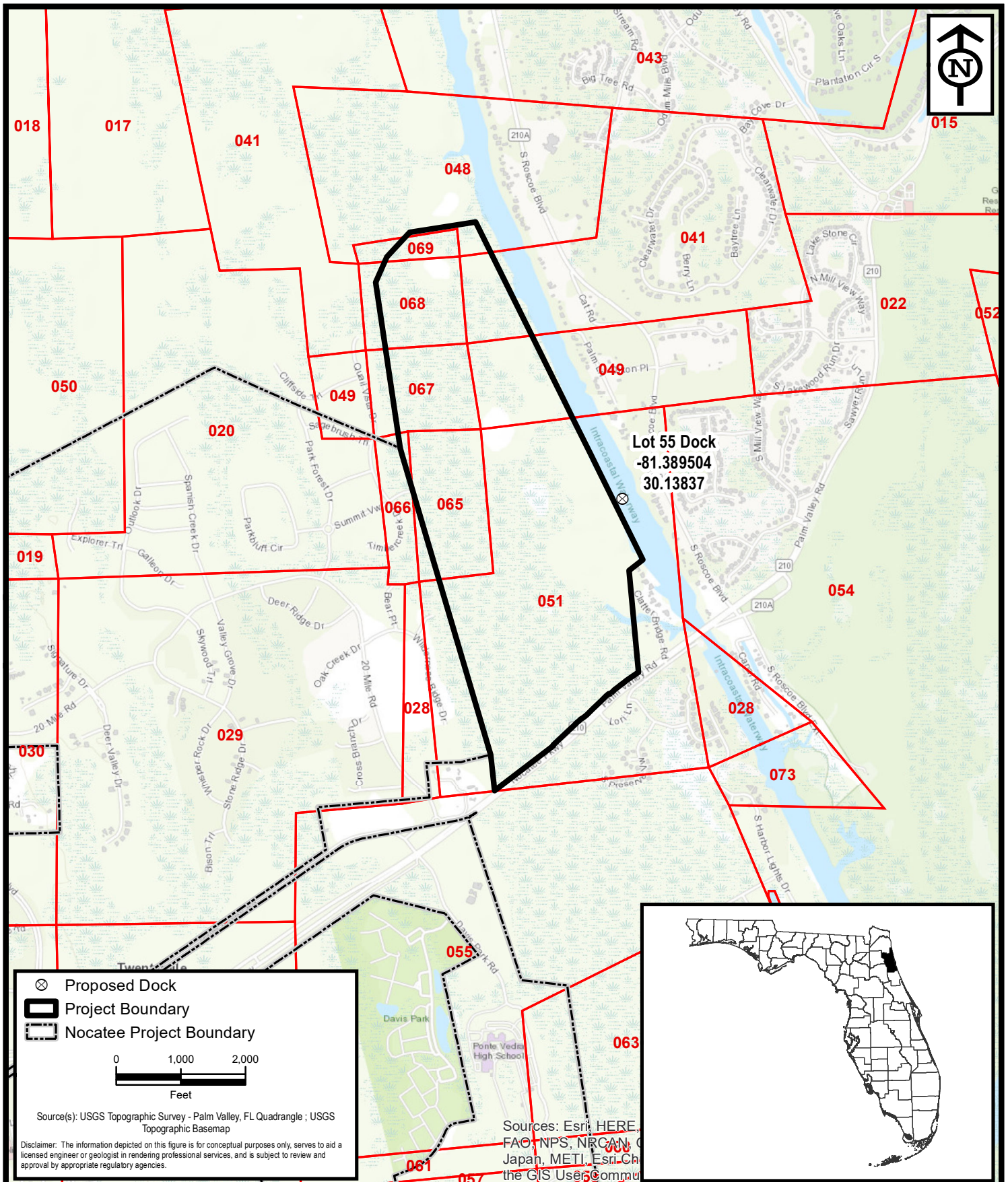
Drawn By JRN

Checked By AMH

Approved By PCP

Figure No. 1





**ENVIRONMENTAL  
SERVICES, INC.**  
A Terracon COMPANY

7220 FINANCIAL WAY, SUITE 100 JACKSONVILLE, FL 32256  
PH. (904) 470-2200 FAX (904) 470-2112

Project Location

Lot 55 Dock

**Twenty Mile Village - Phase 6**

St. Johns County, Florida

Project No. HK207039

Date Apr 2021

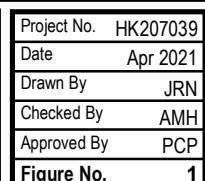
Drawn By JRN

Checked By AMH

Approved By PCP

Figure No. 1

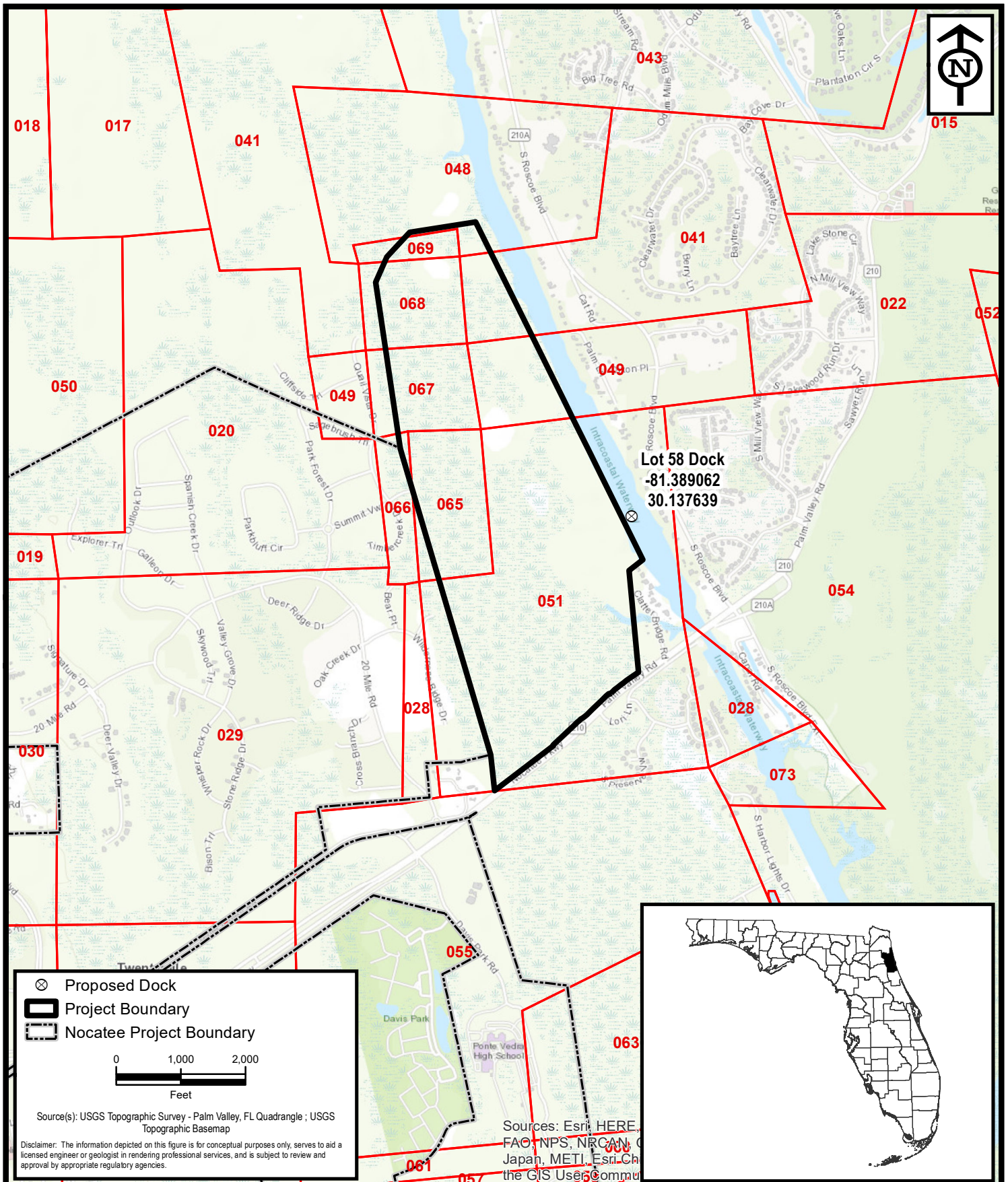












**ENVIRONMENTAL  
SERVICES, INC.**  
A Terracon COMPANY

7220 FINANCIAL WAY, SUITE 100 JACKSONVILLE, FL 32256  
PH. (904) 470-2200 FAX (904) 470-2112

Project Location

Lot 58 Dock

**Twenty Mile Village - Phase 6**

St. Johns County, Florida

Project No. HK207039

Date Apr 2021

Drawn By JRN

Checked By AMH

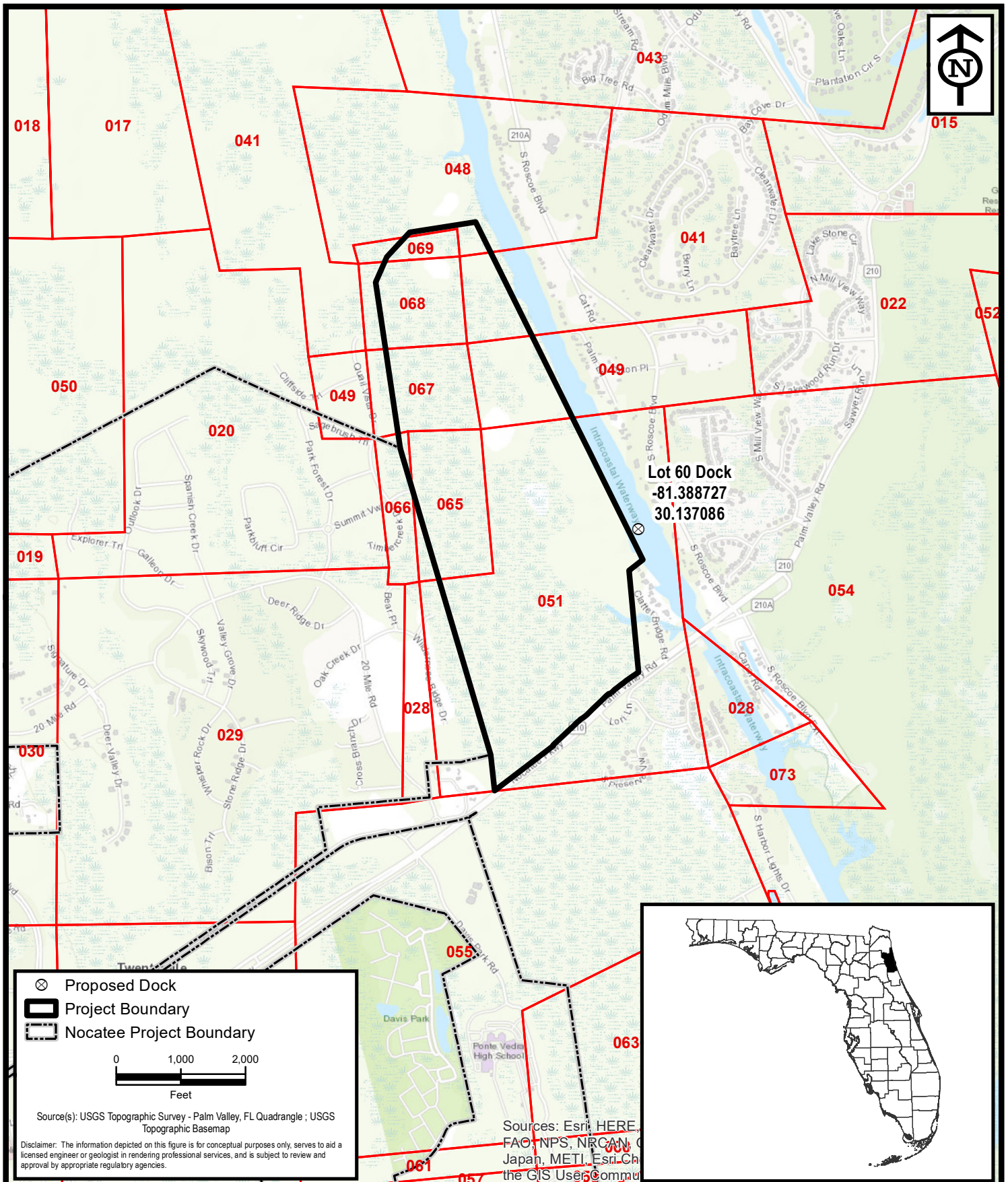
Approved By PCP

Figure No. 1









**ENVIRONMENTAL  
SERVICES, INC.**  
A Terracon COMPANY

7220 FINANCIAL WAY, SUITE 100 JACKSONVILLE, FL 32256  
PH. (904) 470-2200 FAX (904) 470-2112

Project Location

Lot 60 Dock

**Twenty Mile Village - Phase 6**

St. Johns County, Florida

Project No. HK207039

Date Apr 2021

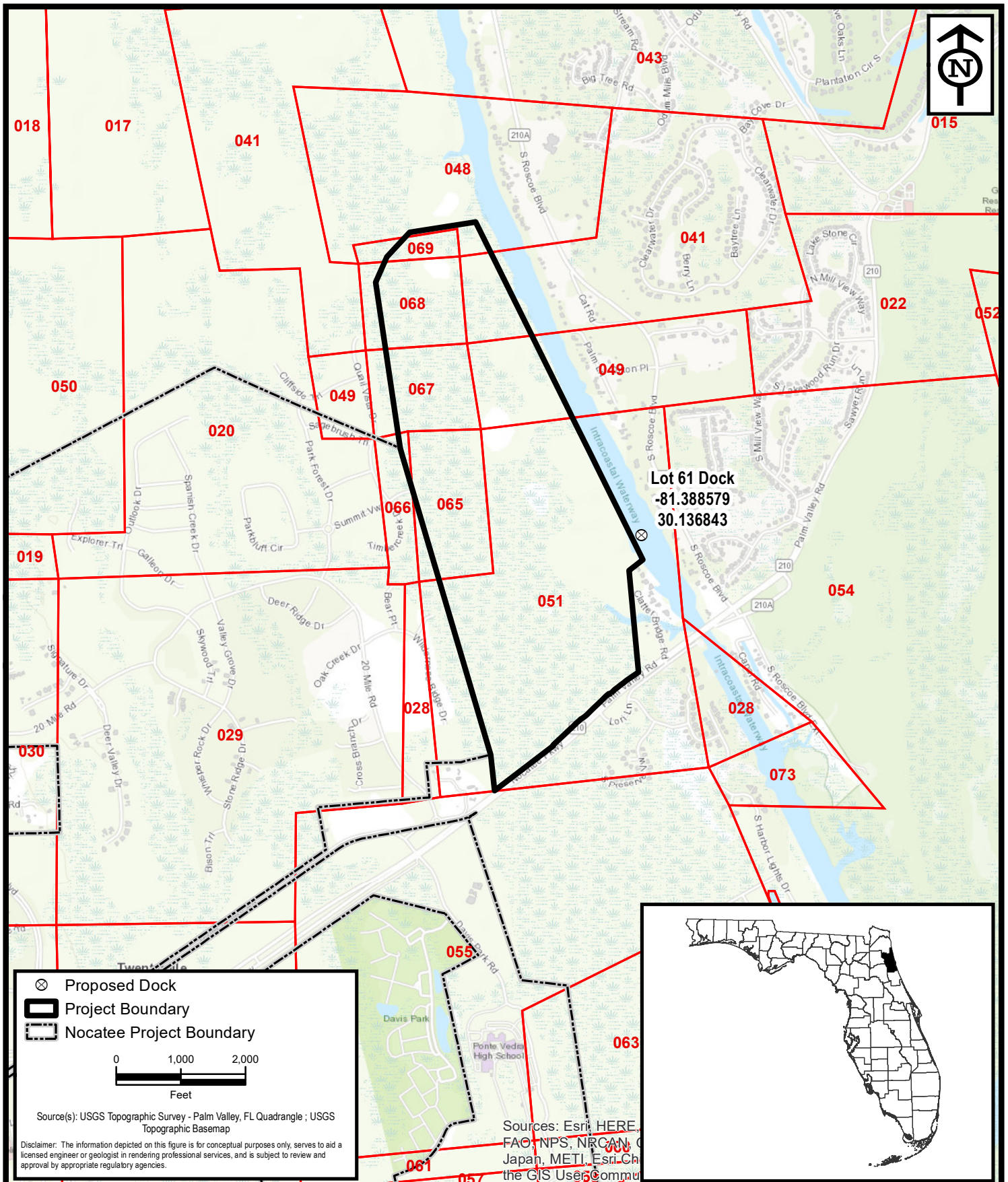
Drawn By JRN

Checked By AMH

Approved By PCP

Figure No. 1





**ENVIRONMENTAL  
SERVICES, INC.**  
A Terracon COMPANY

7220 FINANCIAL WAY, SUITE 100 JACKSONVILLE, FL 32256  
PH. (904) 470-2200 FAX (904) 470-2112

Project Location

Lot 61 Dock

**Twenty Mile Village - Phase 6**

St. Johns County, Florida

Project No. HK207039

Date Apr 2021

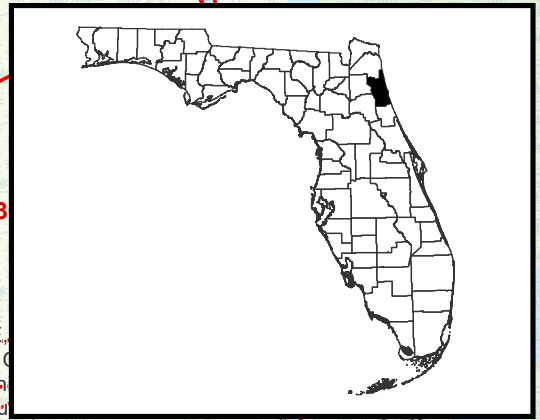
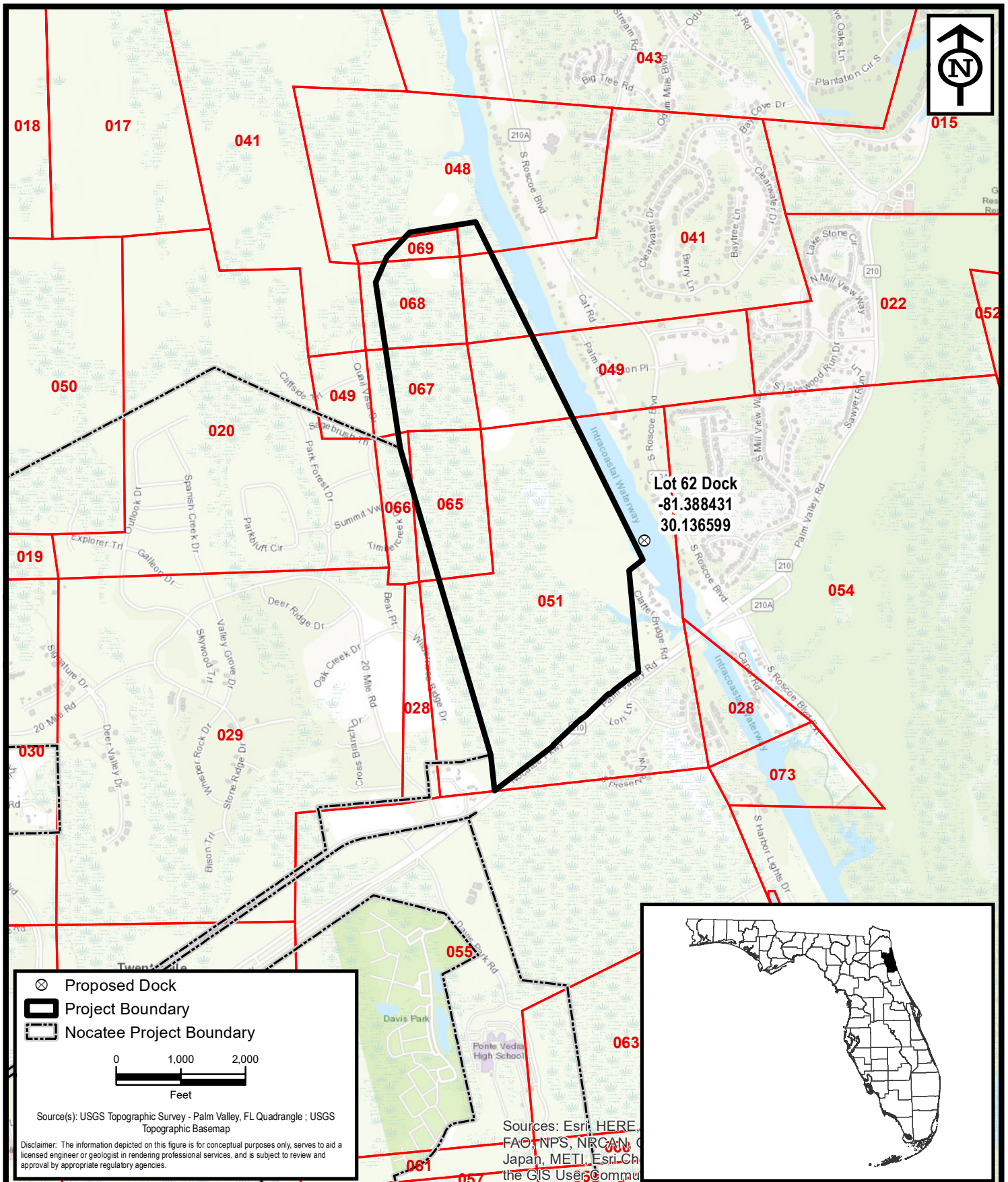
Drawn By JRN

Checked By AMH

Approved By PCP

Figure No. 1





Project Location

Lot 62 Dock

**Twenty Mile Village - Phase 6**

St. Johns County, Florida

Project No. HK207039

Date Apr 2021

Drawn By JRN

Checked By AMH

Approved By PCP

Figure No. 1



**ENVIRONMENTAL  
SERVICES, INC.**  
A Terracon COMPANY

7220 FINANCIAL WAY, SUITE 100 JACKSONVILLE, FL 32256

PH. (904) 470-2200 FAX (904) 470-2112







