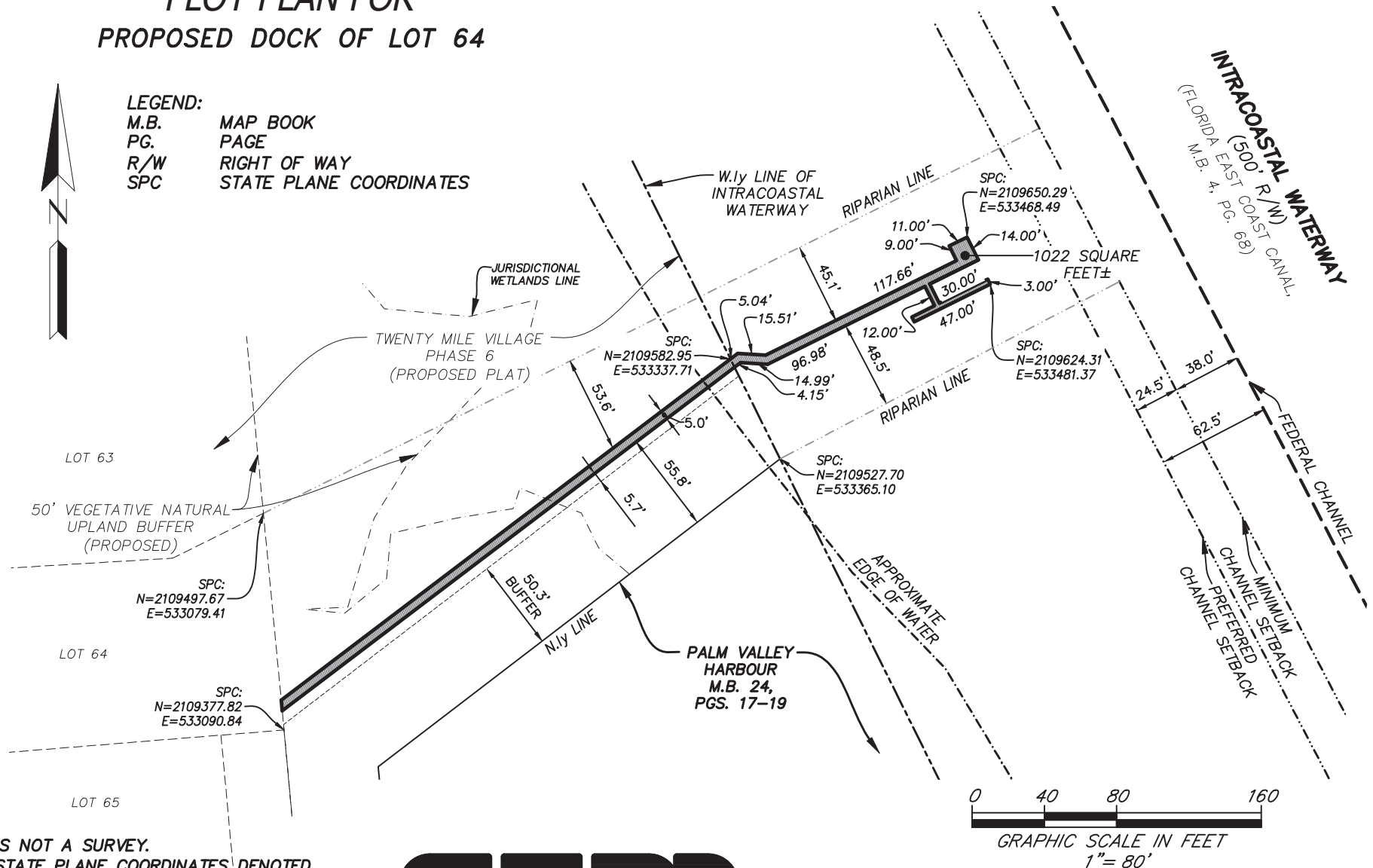


PLOT PLAN FOR PROPOSED DOCK OF LOT 64

LEGEND:
M.B. MAP BOOK
PG. PAGE
R/W RIGHT OF WAY
SPC STATE PLANE COORDINATES



NOTES:

- 1) THIS IS NOT A SURVEY.
- 2) THE STATE PLANE COORDINATES DENOTED HEREON REFER TO THE NORTH AMERICAN DATUM OF 1983 (NAD1983(2011)) WITHIN THE FLORIDA EAST ZONE (901).
- 3) THE SQUARE FOOTAGE FOR THE DOCK DENOTED HEREON IS FOR THE AREA LYING WITHIN THE INTRACOASTAL WATERWAY CORRIDOR.
- 4) JURISDICTIONAL WETLANDS DEPICTED HEREON PER PREVIOUS SURVEY BY ROBERT M. ANGAS ASSOCIATES, INC., FILE No. 121C-21.00A, DATED OCTOBER 13, 2010.

ETM
Surveying & Mapping, Inc.
VISION • EXPERIENCE • RESULTS

14775 Old St. Augustine Road, Jacksonville, FL. 32258
Tel: (904) 642-8550 Fax: (904) 642-4165
Certificate of Authorization No.: LB 3624

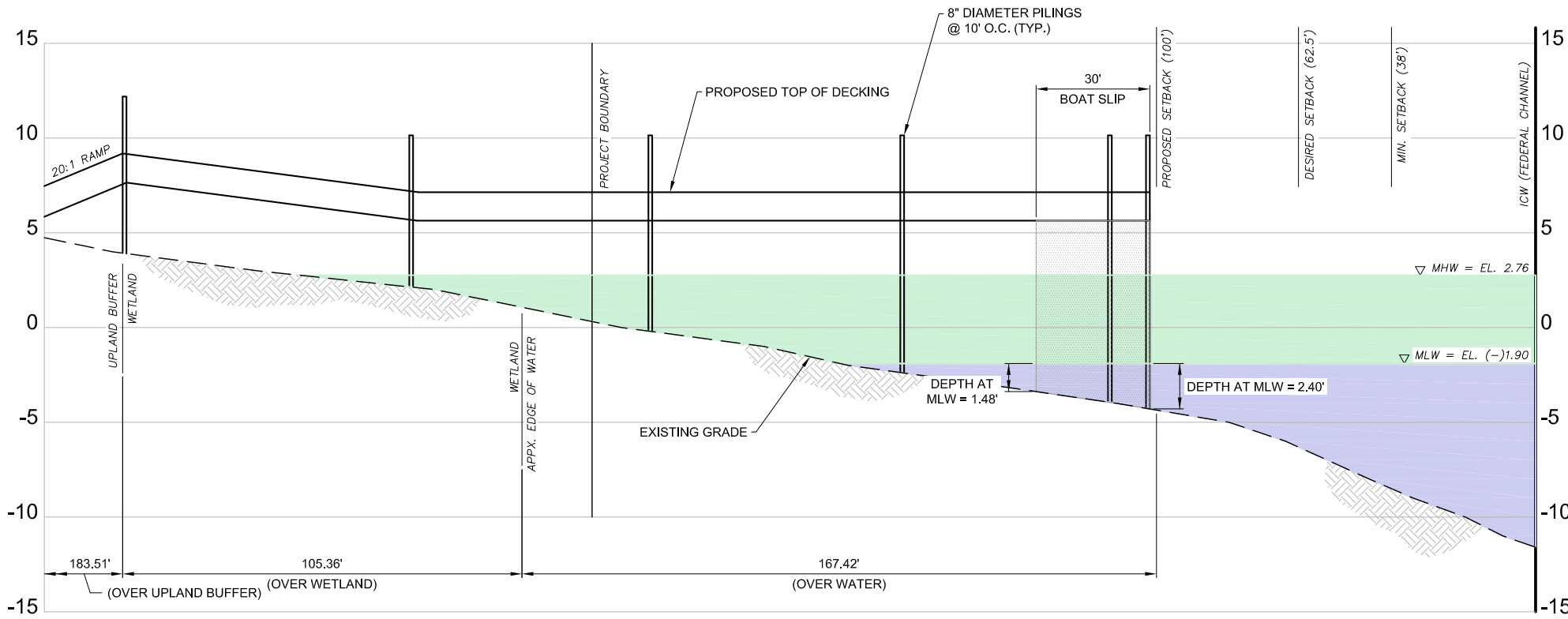
THIS ITEM HAS BEEN ELECTRONICALLY SIGNED AND SEALED
USING A DIGITAL SIGNATURE. PRINTED COPIES OF THIS
DOCUMENT ARE NOT CONSIDERED SIGNED AND SEALED AND THE
SIGNATURE MUST BE VERIFIED ON ANY ELECTRONIC COPIES.




Digital Signature By:
Damon J. Kelly, P.S.M.

SCALE: 1"=80'
DATE: MARCH 4, 2021

DAMON J. KELLY
PROFESSIONAL SURVEYOR AND MAPPER
STATE of FLORIDA LS No. 6284



SCALE: 1" = 40'

Project Mngr: PCP		Project No. HK207039		 <div>ENVIRONMENTAL SERVICES, INC. A Terracon COMPANY</div> <div>7220 FINANCIAL WAY, SUITE 100 JACKSONVILLE, FL 32256 PH. (904) 470-2200 FAX. (904) 470-2112</div>	Profile			FIG. No.
Drawn By: JRN		Scale: AS SHOWN			Dock Permitting			3
Checked By: AMH		File No. X			Twenty Mile Village - Phase 6			
Approved By: PCP		Date: Feb 2021			Lot 64 Dock			
				St. Johns County			Florida	