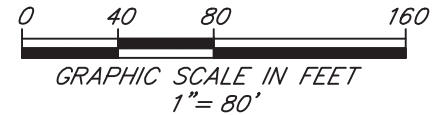
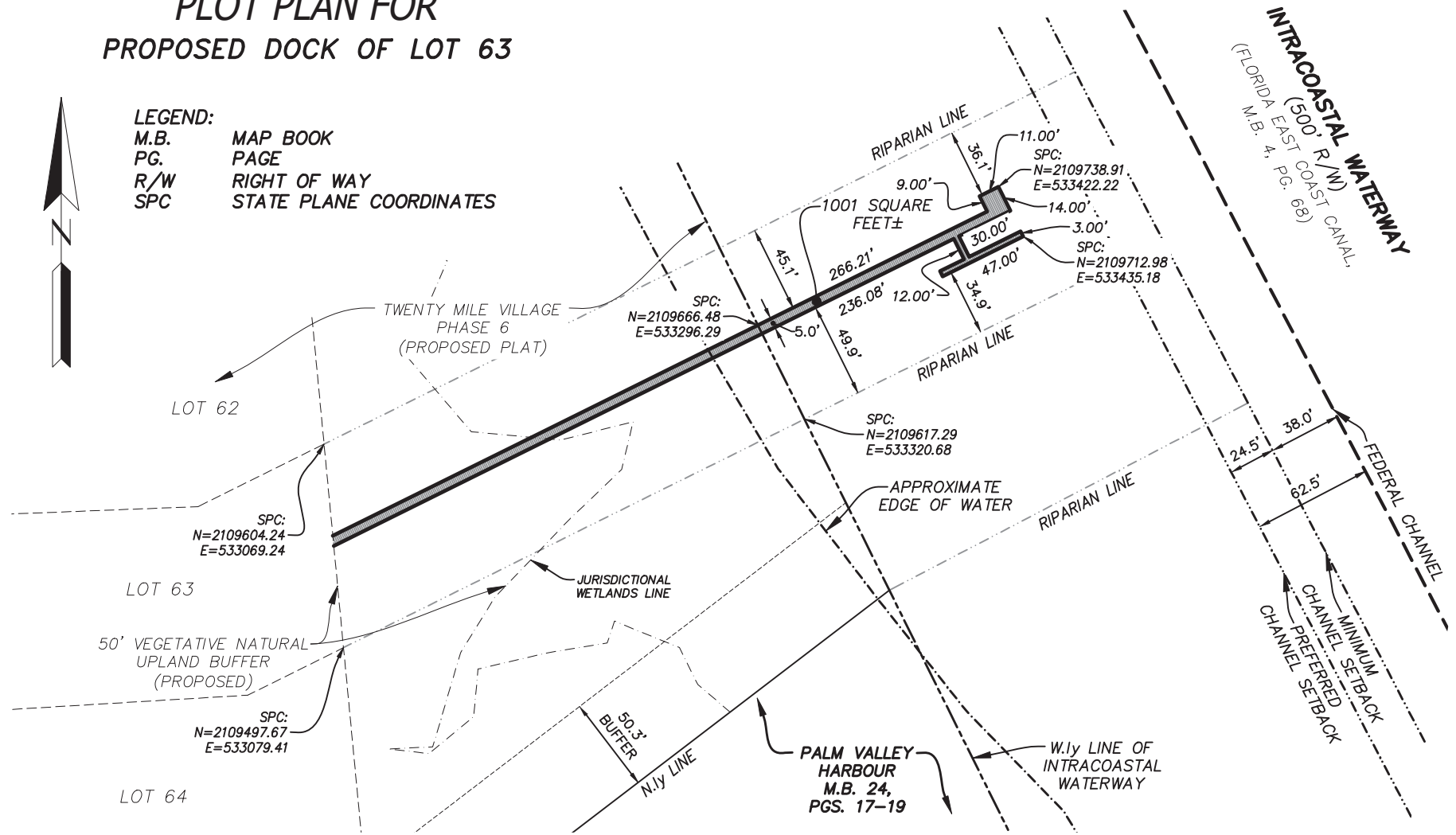


PLOT PLAN FOR PROPOSED DOCK OF LOT 63



LEGEND:
M.B. MAP BOOK
PG. PAGE
R/W RIGHT OF WAY
SPC STATE PLANE COORDINATES



NOTES:

- 1) THIS IS NOT A SURVEY.
- 2) THE STATE PLANE COORDINATES DENOTED HEREON REFER TO THE NORTH AMERICAN DATUM OF 1983 (NAD1983(2011)) WITHIN THE FLORIDA EAST ZONE (901).
- 3) THE SQUARE FOOTAGE FOR THE DOCK DENOTED HEREON IS FOR THE AREA LYING WITHIN THE INTRACOASTAL WATERWAY CORRIDOR.
- 4) JURISDICTIONAL WETLANDS DEPICTED HEREON PER PVIOUS SURVEY BY ROBERT M. ANGAS ASSOCIATES, INC., FILE No. 121C-21.00A, DATED OCTOBER 13, 2010.

ETM
Surveying & Mapping, Inc.
VISION • EXPERIENCE • RESULTS

14775 Old St. Augustine Road, Jacksonville, FL. 32258
Tel: (904) 642-8550 Fax: (904) 642-4165
Certificate of Authorization No.: LB 3624

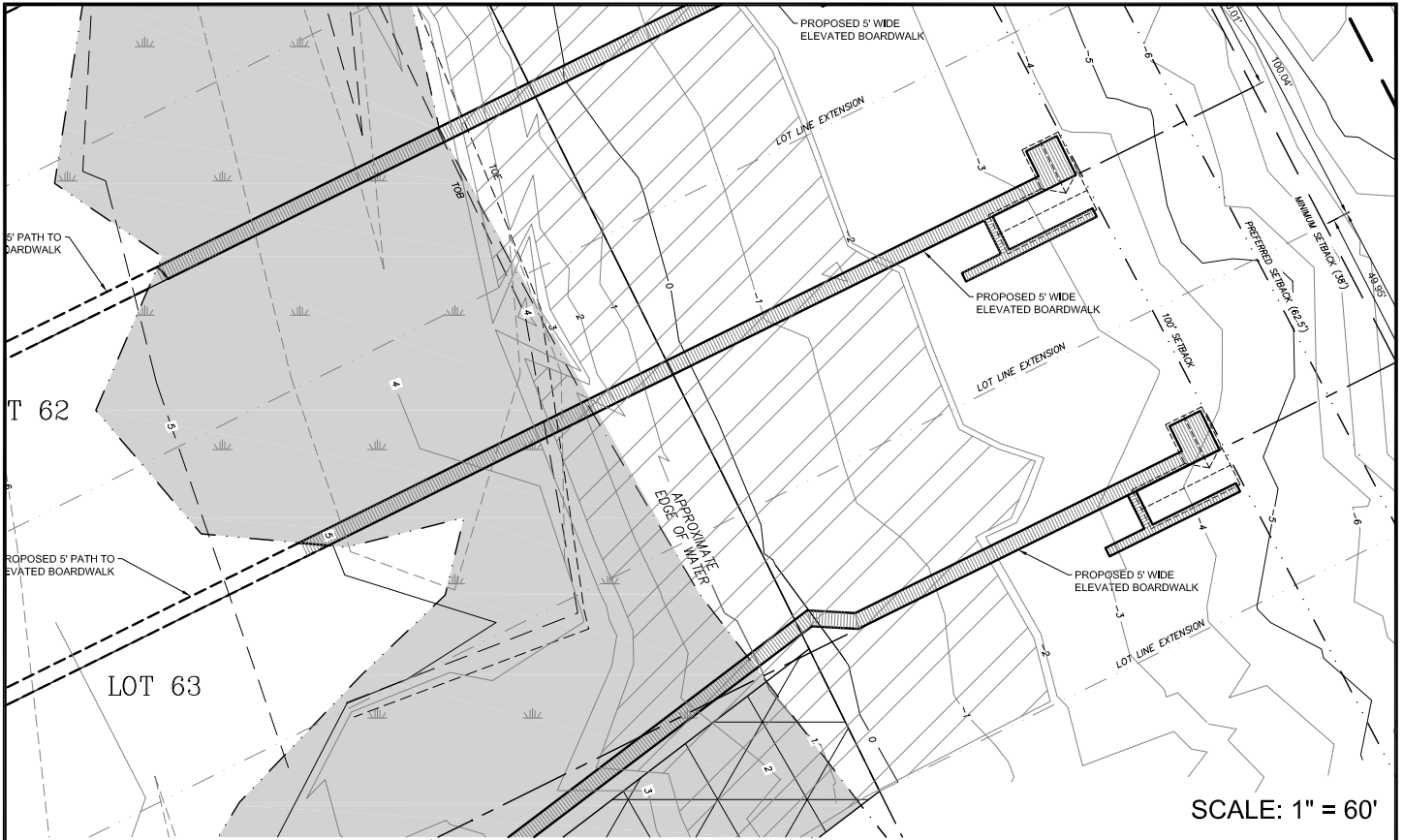
THIS ITEM HAS BEEN ELECTRONICALLY SIGNED AND SEALED USING A DIGITAL SIGNATURE. PRINTED COPIES OF THIS DOCUMENT ARE NOT CONSIDERED SIGNED AND SEALED AND THE SIGNATURE MUST BE VERIFIED ON ANY ELECTRONIC COPIES.



Digital Signature By:
Damon J. Kelly, P.S.M.

DAMON J. KELLY
PROFESSIONAL SURVEYOR AND MAPPER
STATE of FLORIDA LS No. 6284

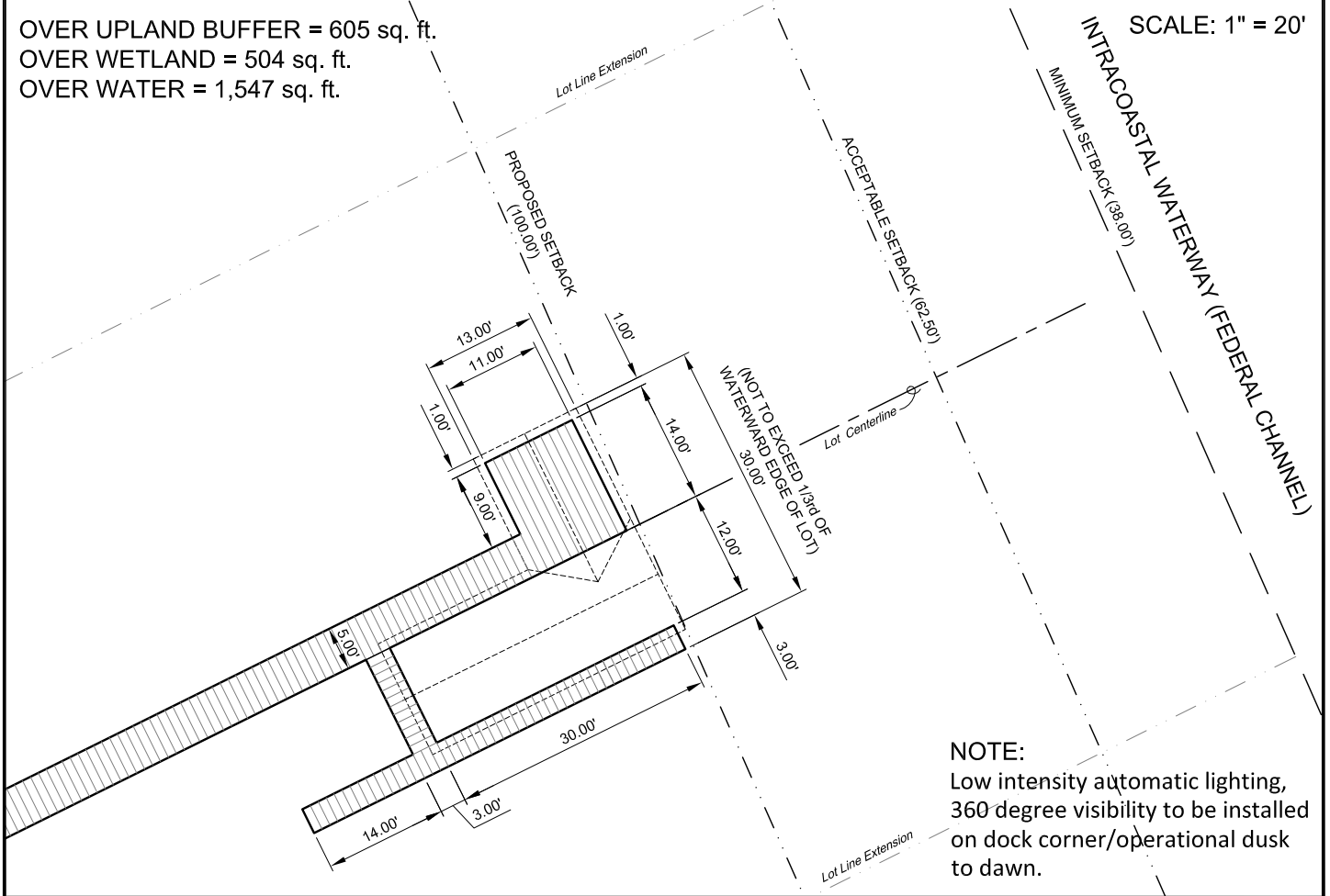
SCALE: 1"=80'
DATE: MARCH 4, 2021



SCALE: 1" = 60'

SCALE: 1" = 20'

OVER UPLAND BUFFER = 605 sq. ft.
 OVER WETLAND = 504 sq. ft.
 OVER WATER = 1,547 sq. ft.



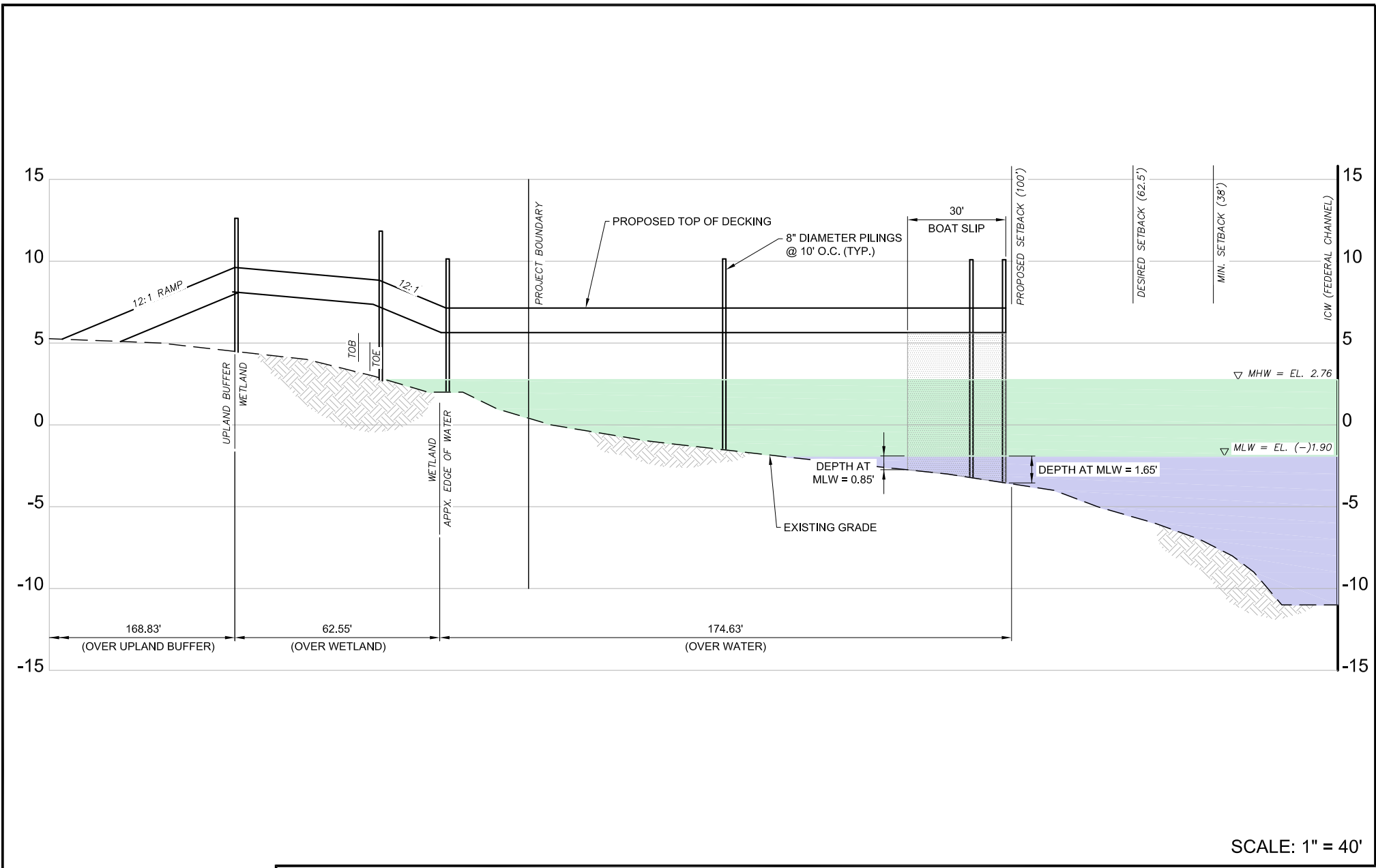
NOTE:
 Low intensity automatic lighting,
 360 degree visibility to be installed
 on dock corner/operational dusk
 to dawn.

Project Mngr:	PCP	Project No.	HK207039
Drawn By:	JRN	Scale:	AS SHOWN
Checked By:	AMH	File No.	
Approved By:	PCP	Date:	Feb 2021


ENVIRONMENTAL SERVICES, INC.
 A Terracon COMPANY
 7220 FINANCIAL WAY, SUITE 100 JACKSONVILLE, FL 32256
 PH. (904) 470-2200 FAX. (904) 470-2112

Site Plan
 Dock Permitting
Twenty Mile Village - Phase 6
 Lot 63 Dock
 St. Johns County Florida

FIG. No.	2
----------	----------



SCALE: 1" = 40'

Project Mngr:	PCP	Project No.:	HK207039
Drawn By:	JRN	Scale:	AS SHOWN
Checked By:	AMH	File No.:	X
Approved By:	PCP	Date:	Feb 2021

ENVIRONMENTAL SERVICES, INC.
 A Terracon COMPANY

7220 FINANCIAL WAY, SUITE 100 JACKSONVILLE, FL 32256
 PH. (904) 470-2200 FAX. (904) 470-2112

Profile
 Dock Permitting
Twenty Mile Village - Phase 6
 Lot 63 Dock
 St. Johns County
 Florida

FIG. No.
3