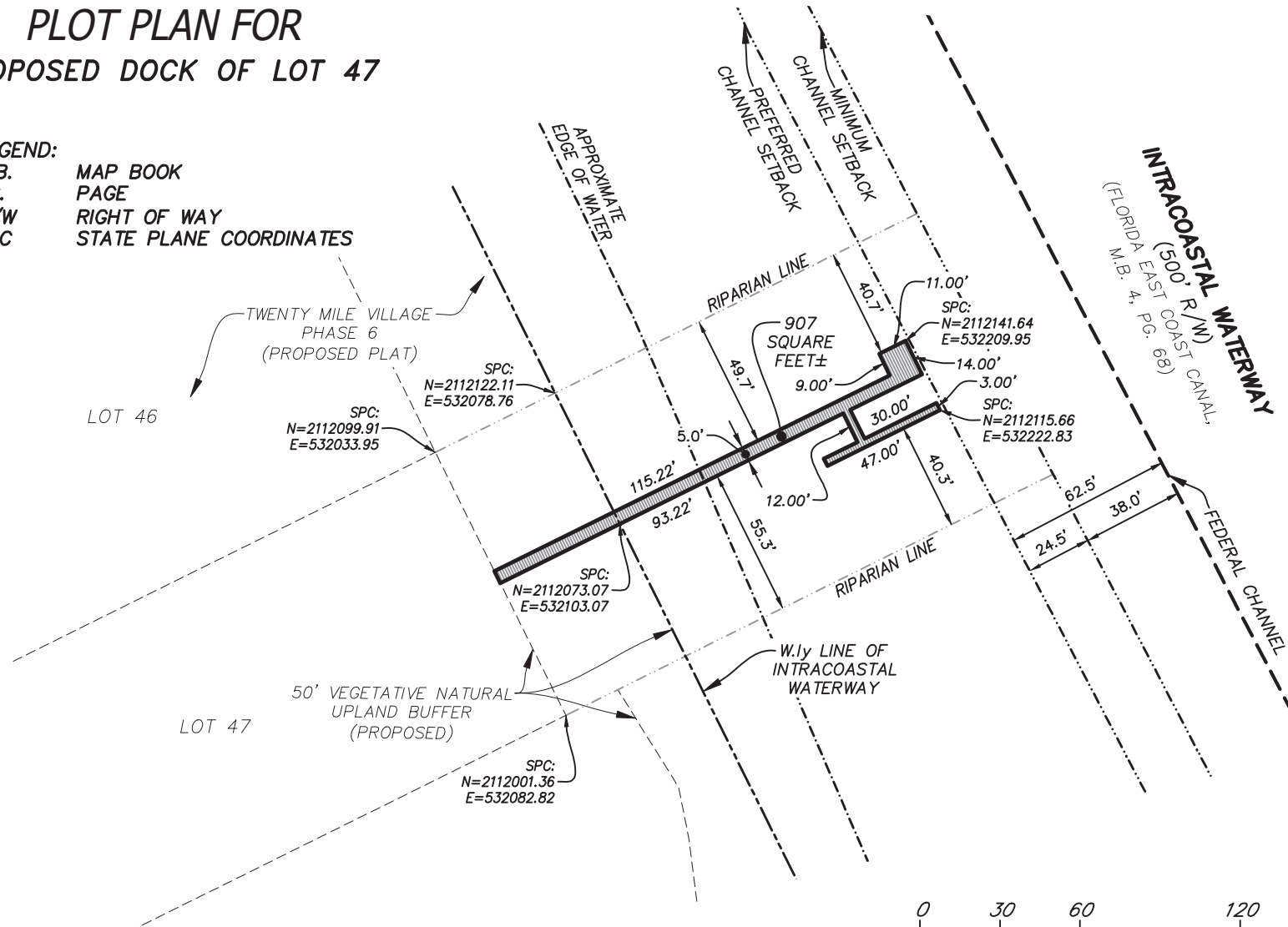


# PLOT PLAN FOR PROPOSED DOCK OF LOT 47

## LEGEND:

M.B. MAP BOOK  
PG. PAGE  
R/W RIGHT OF WAY  
SPC STATE PLANE COORDINATES



## NOTES:

- 1) THIS IS NOT A SURVEY.
- 2) THE STATE PLANE COORDINATES DENOTED HEREON REFER TO THE NORTH AMERICAN DATUM OF 1983 (NAD1983(2011)) WITHIN THE FLORIDA EAST ZONE (901).
- 3) THE SQUARE FOOTAGE FOR THE DOCK DENOTED HEREON IS FOR THE AREA LYING WITHIN THE INTRACOASTAL WATERWAY CORRIDOR.
- 4) JURISDICTIONAL WETLANDS DEPICTED HEREON PER PVIOUS SURVEY BY ROBERT M. ANGAS ASSOCIATES, INC., FILE No. 121C-21.00A, DATED OCTOBER 13, 2010.

# ETM

**Surveying & Mapping, Inc.**  
VISION • EXPERIENCE • RESULTS

14775 Old St. Augustine Road, Jacksonville, FL. 32258

Tel: (904) 642-8550 Fax: (904) 642-4165

Certificate of Authorization No.: LB 3624

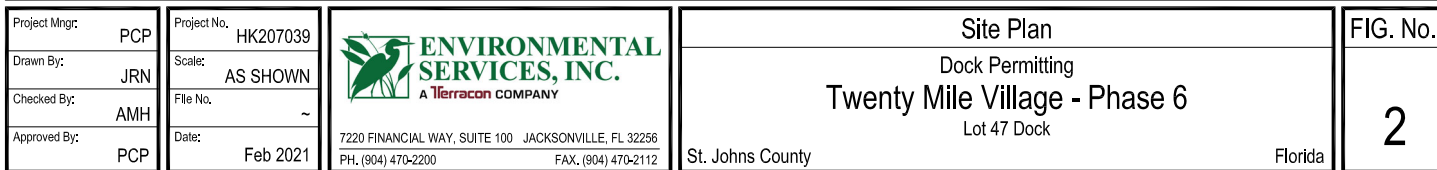
DATE: MARCH 4, 2021

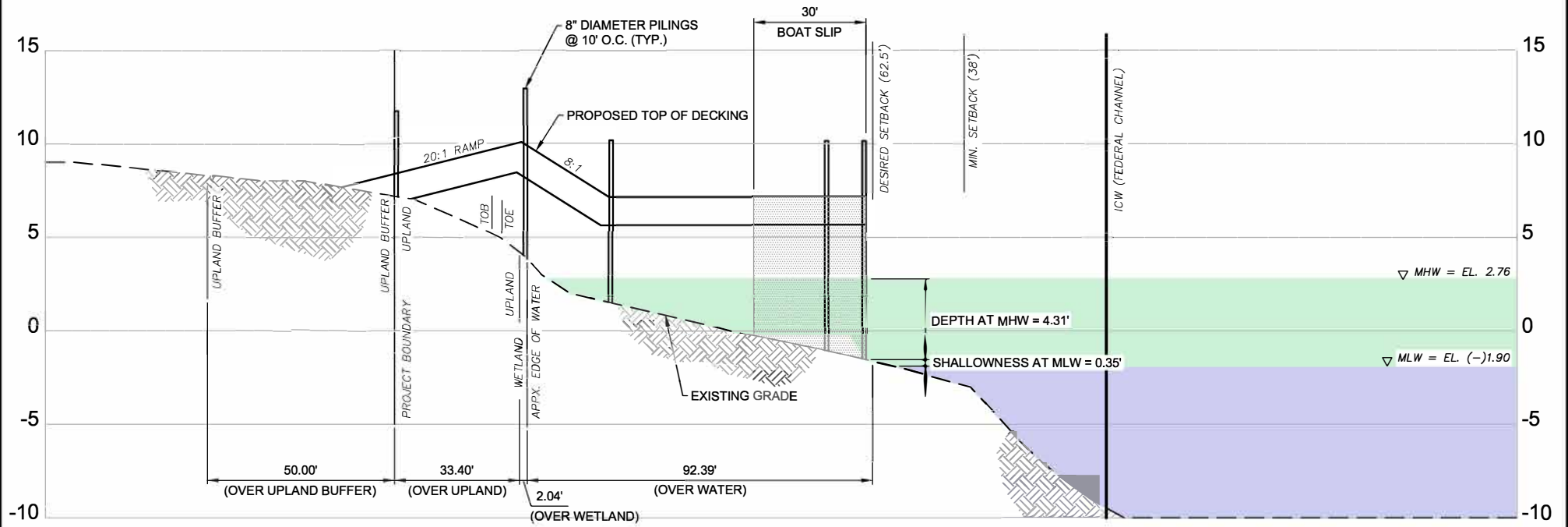
THIS ITEM HAS BEEN ELECTRONICALLY SIGNED AND SEALED  
USING A DIGITAL SIGNATURE. PRINTED COPIES OF THIS  
DOCUMENT ARE NOT CONSIDERED SIGNED AND SEALED AND THE  
SIGNATURE MUST BE VERIFIED ON ANY ELECTRONIC COPIES.




Digital Signature By:  
Damon J. Kelly, P.S.M.

**DAMON J. KELLY**  
PROFESSIONAL SURVEYOR AND MAPPER  
STATE of FLORIDA LS No. 6284





SCALE: 1" = 40'

Project Mngr:	PCP	Project No.	HK207039	 <div>ENVIRONMENTAL SERVICES, INC. <small>A Terracon COMPANY</small></div> <div>7220 FINANCIAL WAY, SUITE 100 JACKSONVILLE, FL 32256 PH. (904) 470-2200 FAX. (904) 470-2112</div>	Profile		FIG. No.  3
Drawn By:	JRN	Scale:	AS SHOWN		Dock Permitting		
Checked By:	AMH	File No.	X		Twenty Mile Village - Phase 6		
Approved By:	PCP	Date:	Feb 2021		Lot 47 Dock		
					St. Johns County	Florida	