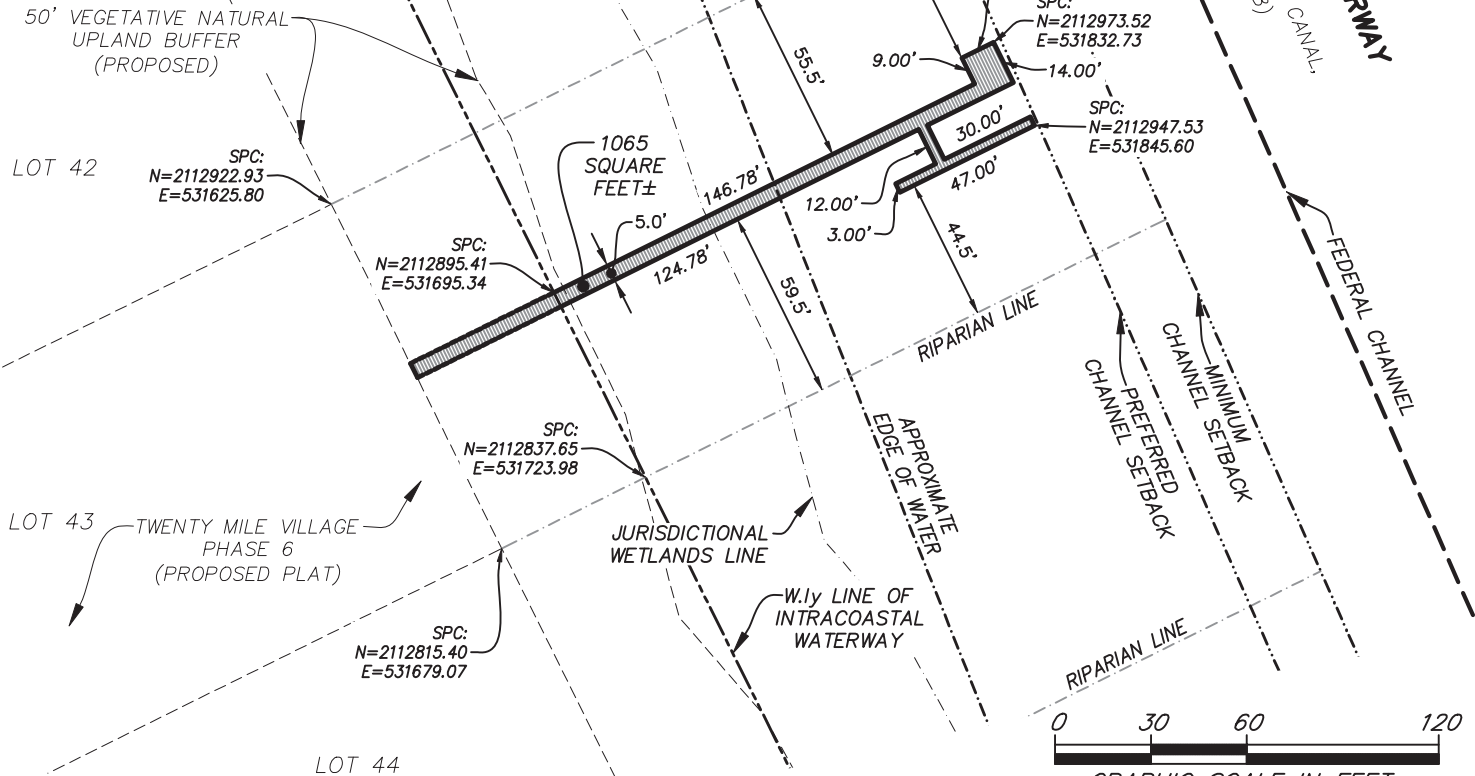


# PLOT PLAN FOR PROPOSED DOCK OF LOT 43

**LEGEND:**  
M.B. MAP BOOK  
PG. PAGE  
R/W RIGHT OF WAY  
SPC STATE PLANE COORDINATES



## NOTES:

- 1) THIS IS NOT A SURVEY.
- 2) THE STATE PLANE COORDINATES DENOTED HEREON REFER TO THE NORTH AMERICAN DATUM OF 1983 (NAD1983(2011)) WITHIN THE FLORIDA EAST ZONE (901).
- 3) THE SQUARE FOOTAGE FOR THE DOCK DENOTED HEREON IS FOR THE AREA LYING WITHIN THE INTRACOASTAL WATERWAY CORRIDOR.
- 4) JURISDICTIONAL WETLANDS DEPICTED HEREON PER PVIOUS SURVEY BY ROBERT M. ANGAS ASSOCIATES, INC., FILE No. 121C-21.00A, DATED OCTOBER 13, 2010.

# ETM

**Surveying & Mapping, Inc.**  
VISION • EXPERIENCE • RESULTS

14775 Old St. Augustine Road, Jacksonville, FL. 32258  
Tel: (904) 642-8550 Fax: (904) 642-4165  
Certificate of Authorization No.: LB 3624

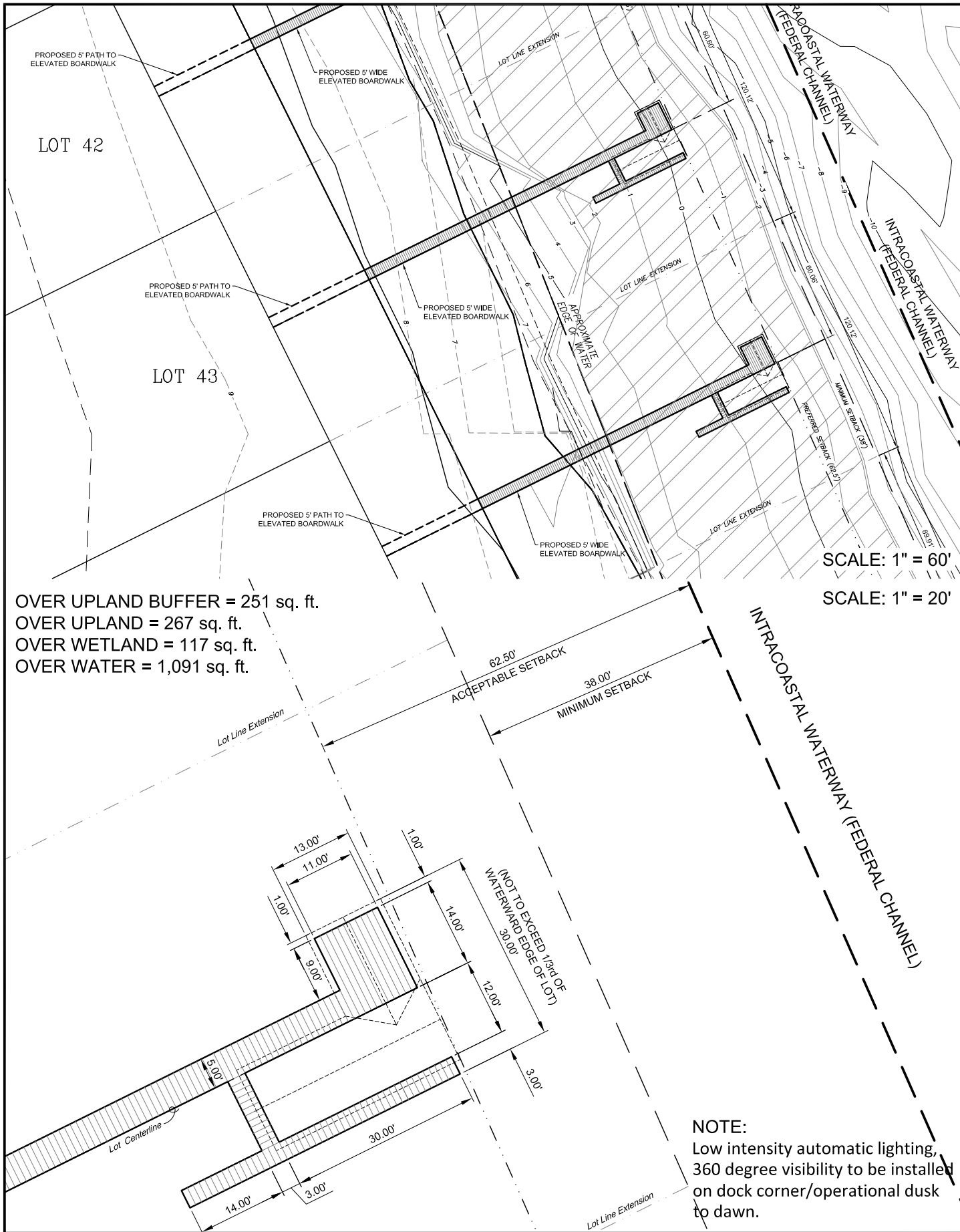
THIS ITEM HAS BEEN ELECTRONICALLY SIGNED AND SEALED  
USING A DIGITAL SIGNATURE. PRINTED COPIES OF THIS  
DOCUMENT ARE NOT CONSIDERED SIGNED AND SEALED AND THE  
SIGNATURE MUST BE VERIFIED ON ANY ELECTRONIC COPIES.



Digital Signature By:  
Damon J. Kelly, P.S.M.

**DAMON J. KELLY**  
PROFESSIONAL SURVEYOR AND MAPPER  
STATE of FLORIDA LS No. 6284

SCALE: 1"=60'  
DATE: MARCH 4, 2021



Project Mng:	PCP
Drawn By:	JRN
Checked By:	AMH
Approved By:	PCP
Project No.	HK207039
Scale:	AS SHOWN
File No.	~
Date:	Feb 2021

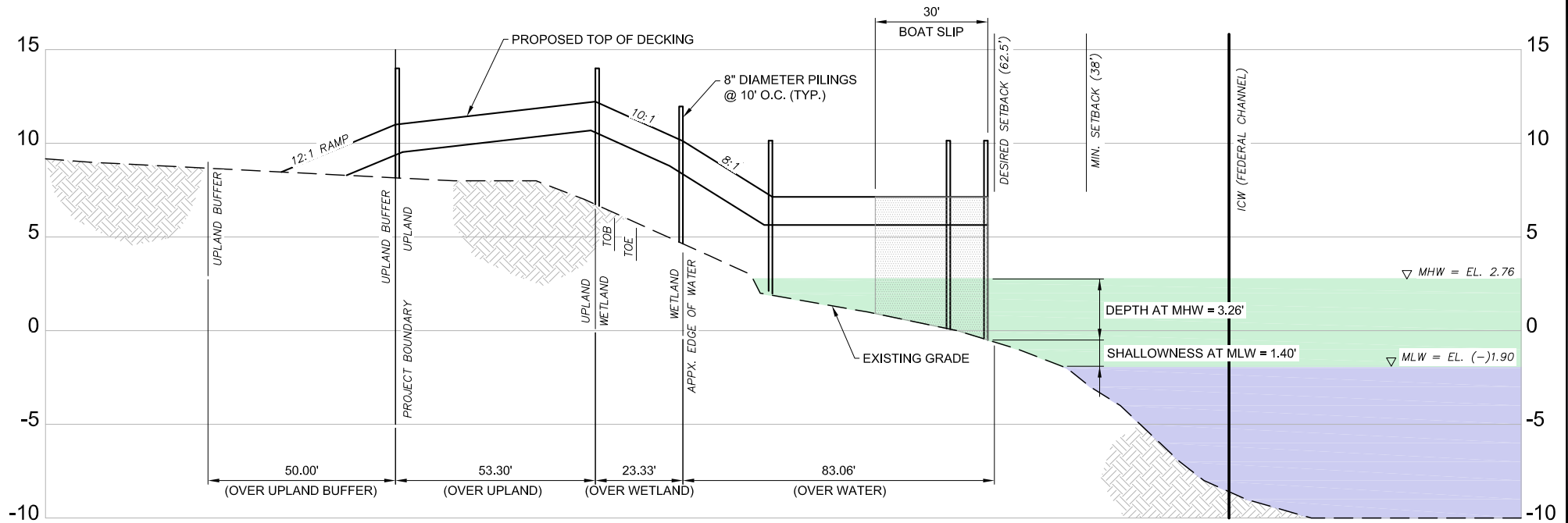
 **ENVIRONMENTAL SERVICES, INC.**  
A Terracon Company

7220 FINANCIAL WAY, SUITE 100 JACKSONVILLE, FL 32256  
PH. (904) 470-2200 FAX. (904) 470-2112


Site Plan  
Dock Permitting  
**Twenty Mile Village - Phase 6**  
Lot 43 Dock

St. Johns County Florida

FIG. No.
2



SCALE: 1" = 40'

Project Mng'r: PCP Drawn By: JRN Checked By: AMH Approved By: PCP	Project No. HK207039 Scale: AS SHOWN File No. X Date: Feb 2021	 <b>ENVIRONMENTAL SERVICES, INC.</b> A Terracon COMPANY 7220 FINANCIAL WAY, SUITE 100 JACKSONVILLE, FL 32256 PH. (904) 470-2200 FAX. (904) 470-2112	Profile Dock Permitting <b>Twenty Mile Village - Phase 6</b> Lot 43 Dock St. Johns County Florida	FIG. No.  <b>3</b>
--	---	---	--	--------------------------