



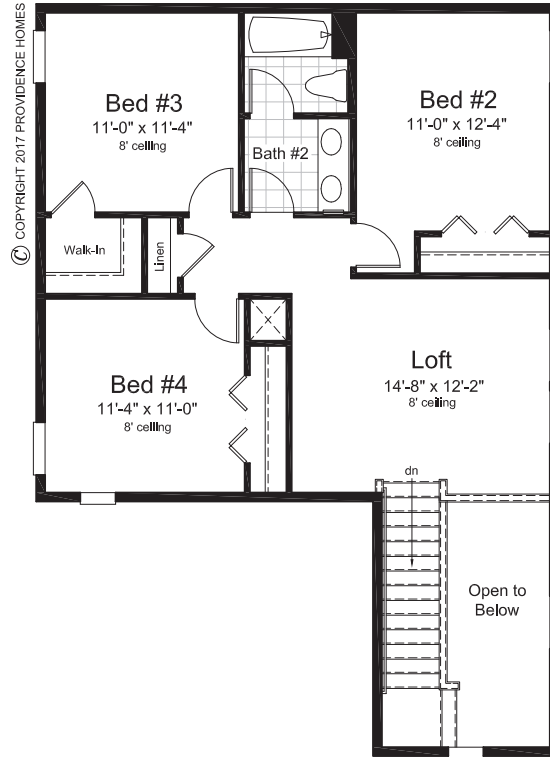
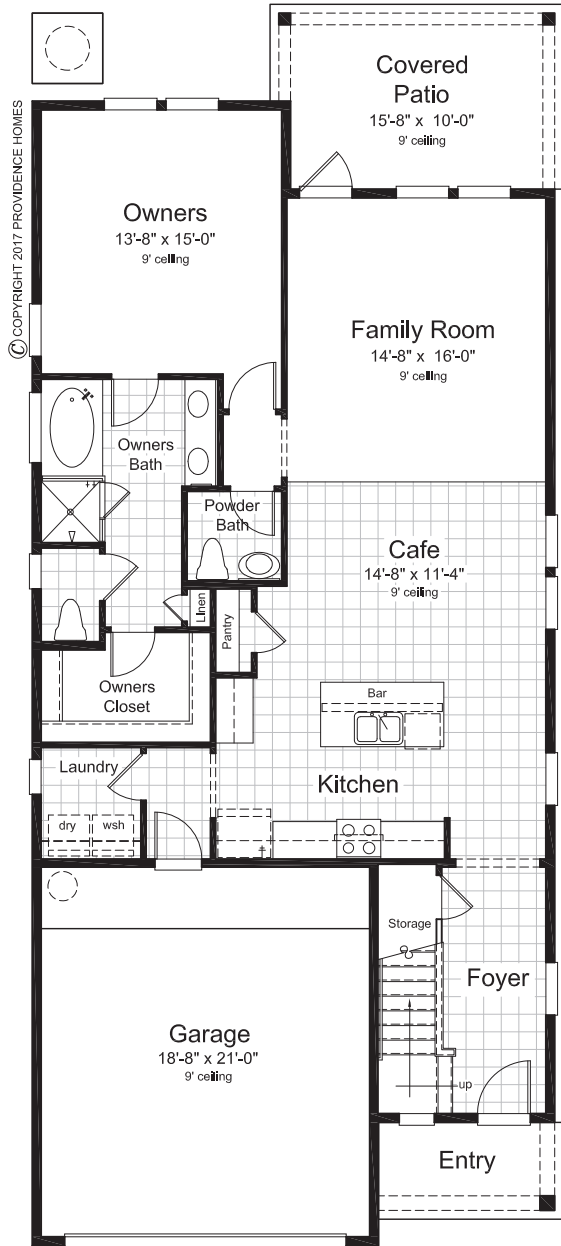
"Jacksonville's Hometown Builder"



SOUTHERN CRAFTSMAN ELEVATION

THE HERNANDO

FROM THE ASPIRATION COLLECTION
AT CROSSWATER



CAPE COD ELEVATION



FLORIDA FARMHOUSE ELEVATION



PRAIRIE ELEVATION

THE HERNANDO

4 BEDROOMS
2 1/2 BATHS
LOFT
2-CAR GARAGE

LIVING AREA:
2,204 SQ. FT.



MyProvidenceHome.com



Illustrations are artists concepts. Actual colors may vary from what is seen on brochure. Dimensions and square footage are approximate. Builder reserves the right to modify floor plans, elevations, colors and materials without notice. Actual areas may vary with construction. Certain items shown are for conception only and may not be included as standard. See standard features for more information. Floor plan shown is for the Florida Farmhouse Elevation; other elevations may vary floor plan slightly. Marketed Exclusively by Providence Realty LLC. NOT TO SCALE. Last revised 11.20.2019. © Copyright 2017 Providence Homes, Inc. - ALL RIGHTS RESERVED. CGC053640.