



THE FLEMING - F at NOCATEE

THE WEST INDIES

4 Bedrooms • 3.5 Bathrooms • 2-Car Garage • 1,966 ft² Living Area • 2,499 ft² Under Roof

The Fleming is a beautifully designed two-story townhome featuring a full master suite on the first floor, along with a living room boasting a two-story ceiling height and a modern kitchen and dining room. Upstairs, you'll find three additional bedrooms, a game room, a covered balcony, a convenient laundry room, and two full bathrooms. The Fleming floor plan perfectly balances luxury and functionality for modern living.

* Renderings may vary from actual home. Please see disclaimer for more details.

\$1,149

ESTIMATED SAVINGS



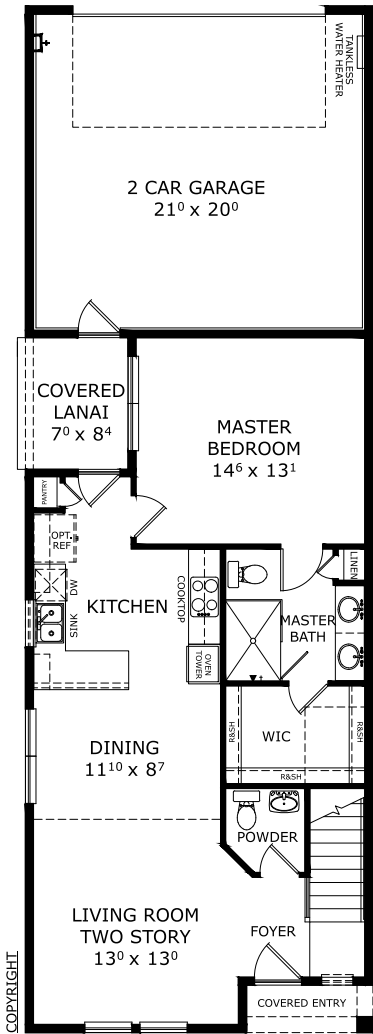
This home has a HERS Score of 56 and is estimated to save you \$1,149 on your annual utility bills vs. a resale home.

THE FLEMING - F

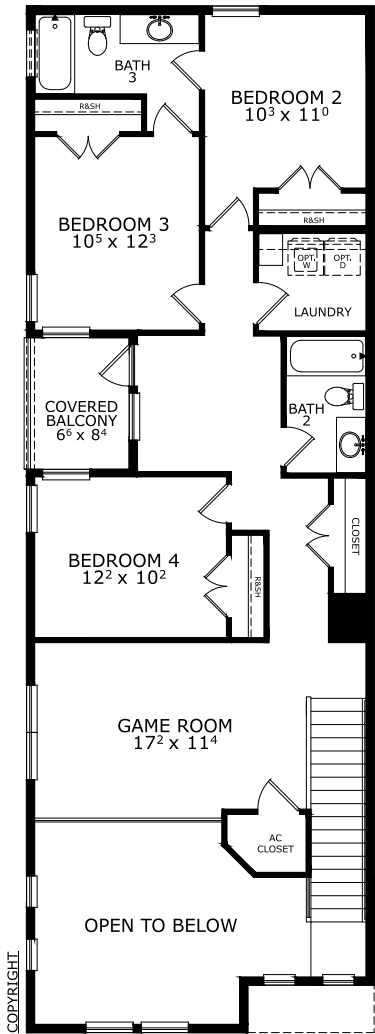
4 Bedrooms • 3.5 Bathrooms • 2-Car Garage

Nocatee **Available in**
Ponte Vedra, FL West End Townhomes

Living Area: 1,966 ft² **Under Roof:** 2,499 ft²



FIRST-SECOND FLOOR



No Maintenance Townhomes! [Speak to a Sales Counselor \(844\) 349-6401](#) or visit [ICIHomes.com](#)

©1994-2024 ICI Homes™ is a registered trademark whose divisions operate under CBC1264300, CBC1262120, CRC1333091, CBC1262114, CBC1257263 and CBC1265743. Features may be plan specific and vary. Please consult a Sales Associate for specific feature information. All new ICI Homes come with a HBW 2-10 warranty. Certain elevations may have additional fees. Prices may not include lot premiums, upgrades, and options. Inventory home completion date may vary. All prices subject to change without notice. All plans are property of ICI Homes and cannot be copied or used without permission. Prices, promotions, incentives, features, options, amenities, floor plans, elevations, site maps, designs, materials, and dimensions are for illustrative purposes only and subject to change without notice. Plans should not be relied upon as representation express or implied of final sizes, locations, features or dimensions. Square footage and dimensions are estimated and may vary from description. All HERS ratings and savings are calculated by a third party energy rating service. Actual savings will depend on a number of factors, including but not limited to daily activities, home maintenance practices, household size, use of appliances, lighting and internal climate control systems, lot orientation, and surrounding climate and weather conditions. Created on 06/28/2024: _____ Garage Orientation R / L: _____

